

Data Communications and Homelessness

MC: Simon Schrapel, Chief Executive, Uniting Communities

Dr Priscilla Ennals

Neami National

Gary Maguire

Office for Data Analytics

Greg Knagge

Nation Creative

Alisa Willis

Early Intervention Research Directorate
Department of Human Services

Brought to you by



PREVENTING HOMELESSNESS

#HomelessnessConference @dondunstanfoundation



Data Communications and Homelessness

Simon Schrapel AM

CEO, Uniting Communities

Priscilla Ennals

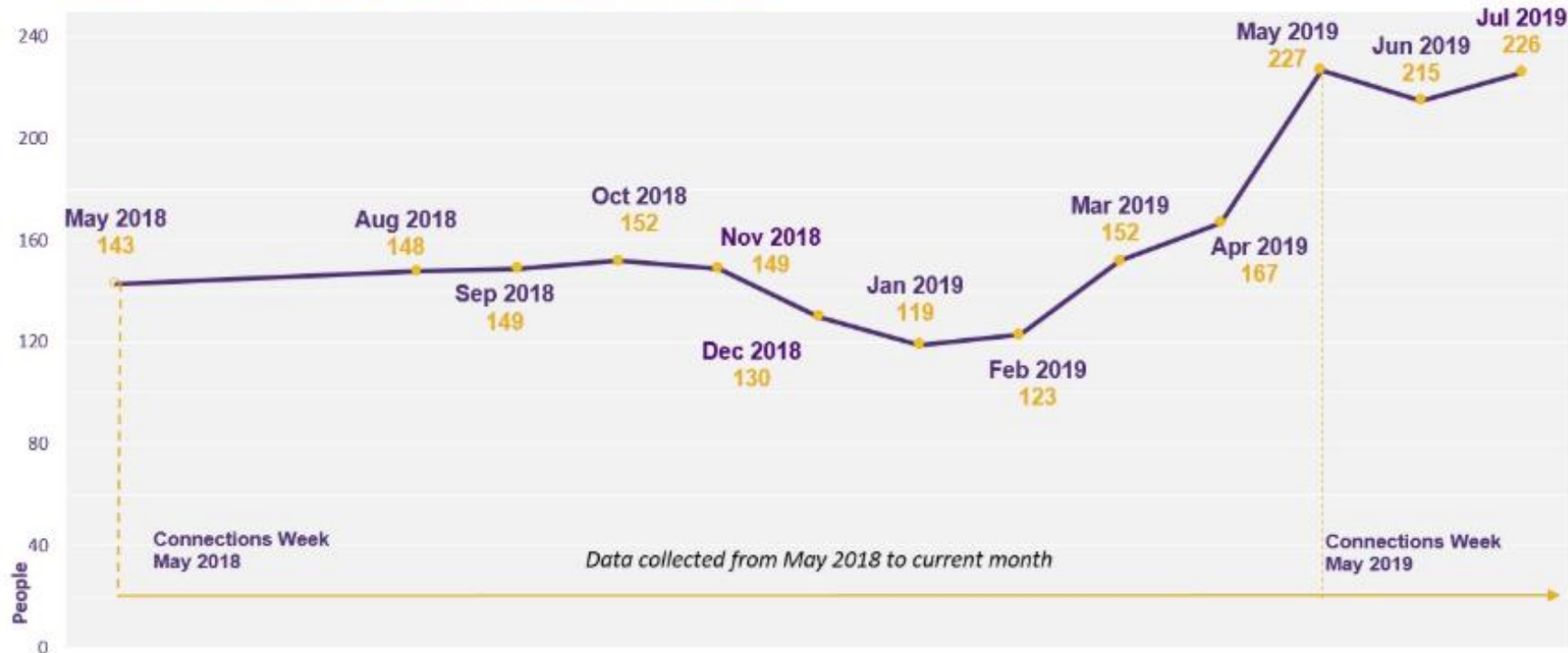
Senior Manager – Research and Evaluations, Neami National



since May 2018

Rough Sleeping in Adelaide

Number of people sleeping rough in Adelaide's inner city



Newly
identified
384

Number housed through
AZP
180

Currently sleeping
rough
226



Outflow

Housed
+
Moved to
inactive

>
=

Inflow

Newly identified
+
Returned from
inactive
+
Returned from
housed



The pros and cons of letting our data all hang out

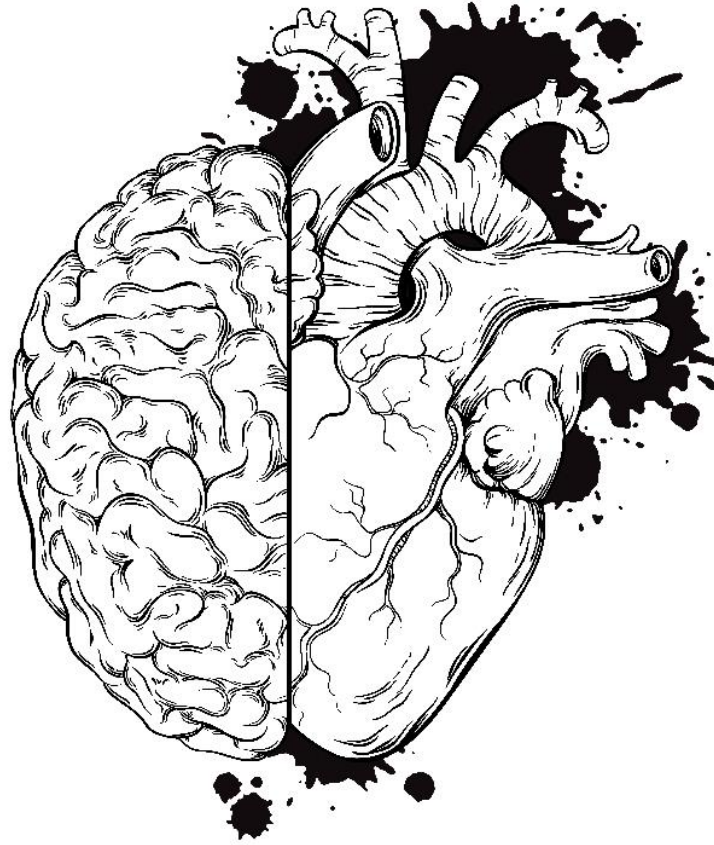
Photo by [Erik Witsoe](#) on [Unsplash](#)



Greg Knagge

CEO, Nation Creative

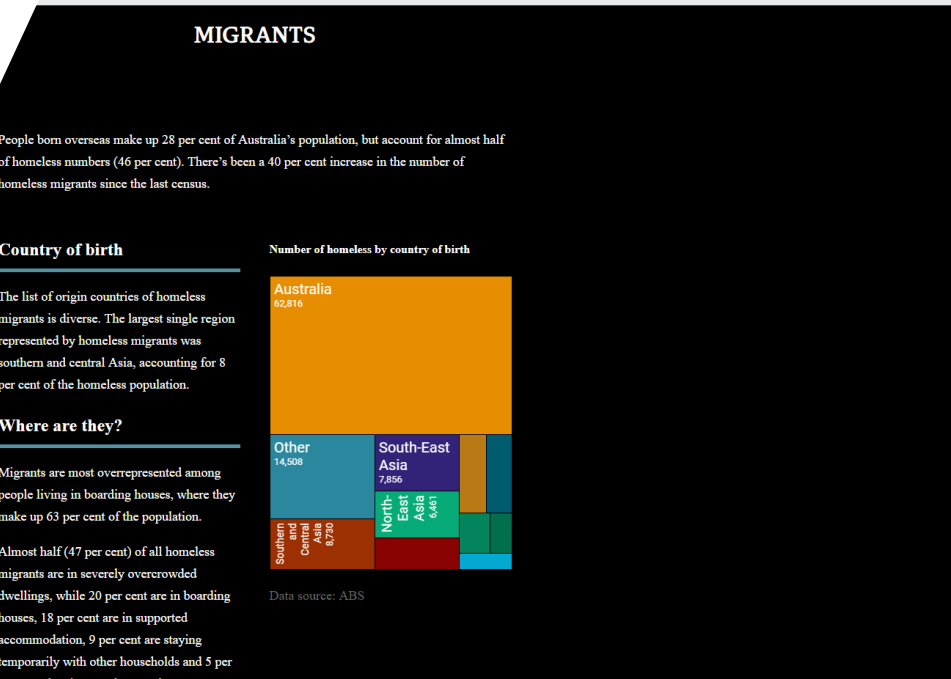
data

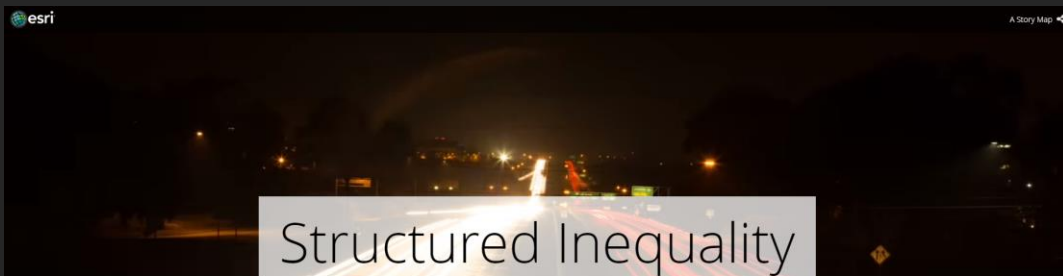


emotional connection

Gary Maguire

StateStat Director (Senior Geospatial Intelligence Officer)
Office for Data Analytics, Department of the Premier and Cabinet



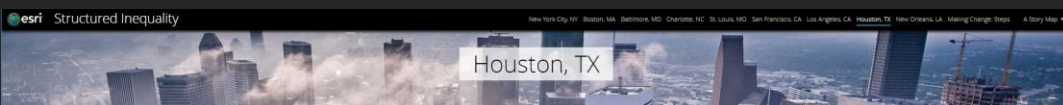
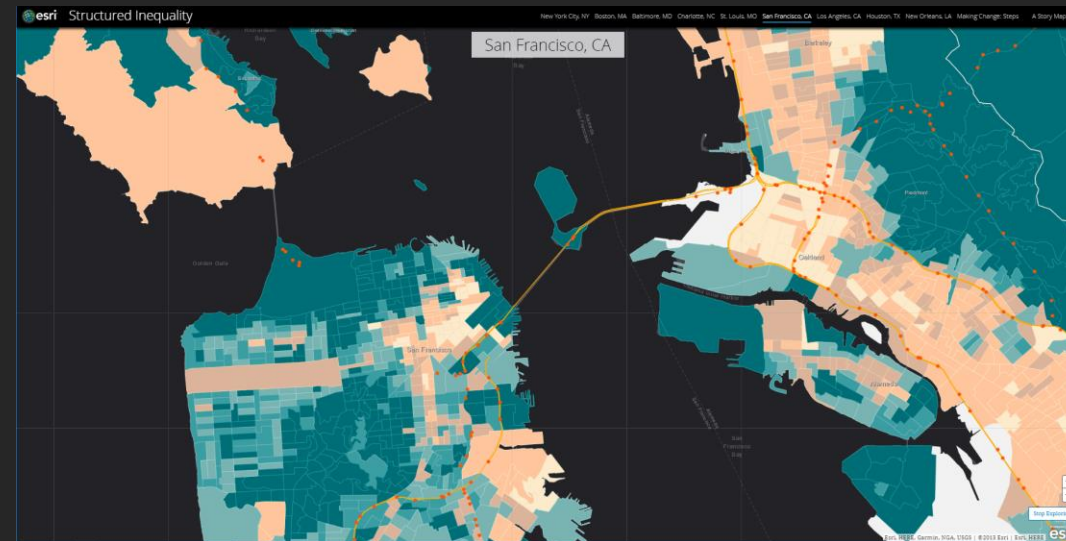


Structured Inequality

Does the United States Federal Interstate System bring us together or keep us apart?

The Federal-Aid Highway Act, popularly known as the National Interstate and Defense Highways Act, was signed into law by President Dwight D. Eisenhower on June 29, 1956. The Act made federal funds available to cover up to 90 percent interstate construction cost for any municipality.

Between post-War prosperity, the growth of the automobile industry, and anxieties about nuclear attack, every development project could be summed up with one goal: increased mobility. Initially, the System was built to serve as an efficient escape route should the country be attacked, but it also served as a job multiplier and icon of growth. Interstate construction was one of the largest employment projects America had seen to date, in addition to providing state



Houston, TX

Houston's highway system forms a teardrop-shaped border around Downtown via I-45, I-10, and US 59. I-45 separates Downtown Houston from wealthy suburbs to the West, including River Oaks. US 59 separates downtown from the eastern, historically minority and low-income neighborhoods, including Sunnyside, a historically African-American neighborhood with a 1 in 11 chance of residents being victim to a crime each year, according to FBI data.

The city is refining a \$7 billion highway improvement plan aimed at decreasing congested traffic by expanding highway lanes and increasing incentives for buses and carpool. The current plan stacks parts of I-45 above US-59.

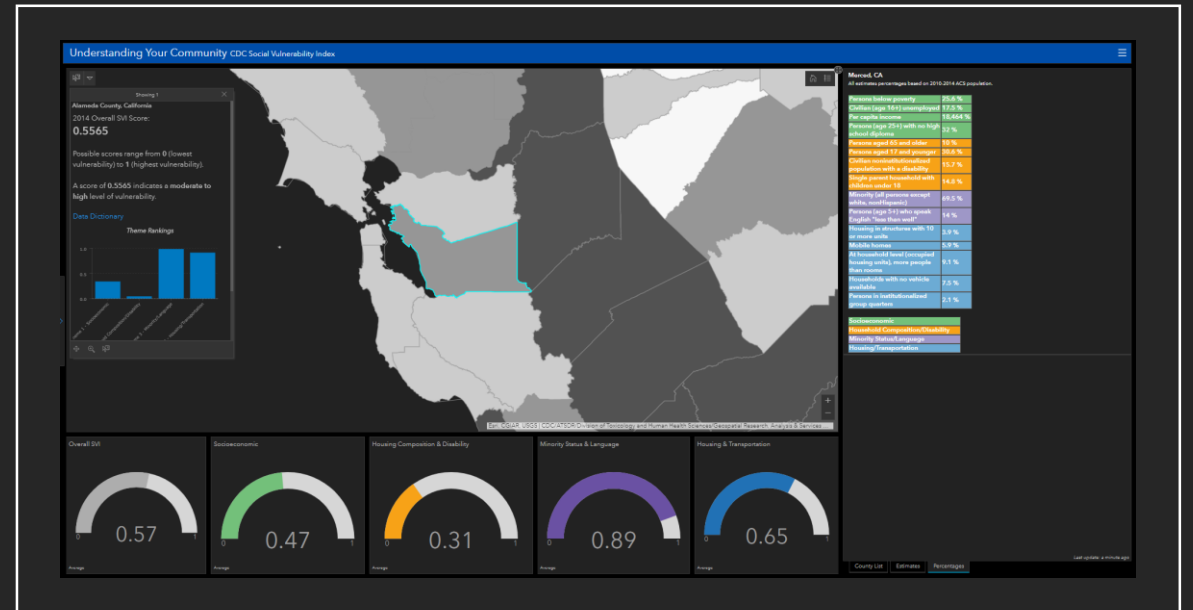
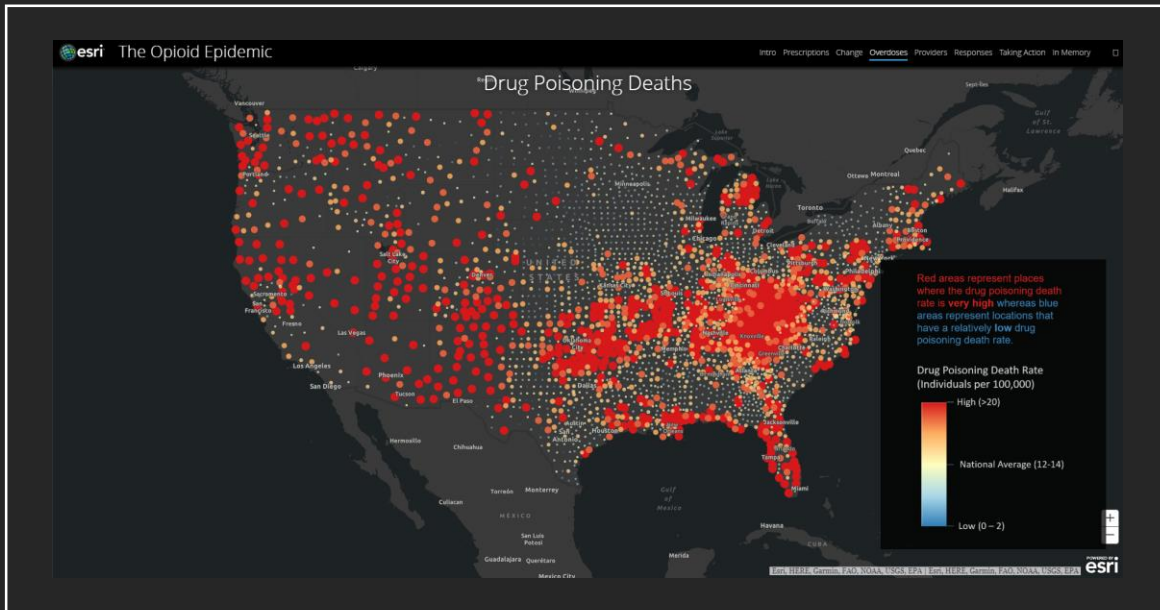


In the first twenty years of the Federal Interstate System, construction displaced an estimated 475,000 families and over one million Americans. Most were low-income people of color living in urban centers.



Highway construction to new way for 405 and 10 in 1967 Los Angeles. Source: Los Angeles Examiner Collection, USC Libraries

Work crews razed houses, split neighborhoods, and bulldozed natural landscapes to make room for bridges, on-ramps, and roadway.



Alisa Willis

Director, Early Intervention Research Directorate
Department of Human Services

Early Intervention Research Directorate

Data analysis – a multidisciplinary approach to system reform

Government Partners:

- Early Intervention Research Directorate – lead agency for research program
- Office for Data Analytics – data sharing infrastructure
- Other Departments – Child Protection, Education, Health, etc.

Research Partners:

- BetterStart, University of Adelaide – epidemiology
- Australian Centre for Child Protection – case file reviews
- Post-doctoral fellowships (UniSA, Flinders, Adelaide)

Co-Design:

- Practitioners and people with lived experience



CHALLENGES

- Making the case that using data is an opportunity not a threat
- History of data use in welfare sector
- Reconciling population-level analysis and practitioner experience
- Data capture - structured vs unstructured

OPPORTUNITIES

- Deliver measurable outcomes that matter for our clients
- System planning using population-level data, rather than samples/survey
- Ability to identify and respond to trends
- Clearer business case for service reform



Questions

- How do we use data to drive policy in Adelaide?
- Are there times when data should not be shared?
- What is the cost of not sharing data?
- What are some of the key ethics and data sharing issues?

Thank you Panel attendees.

Please make your way to the lectern
in the foyer.

Closing Address

IN FOYER

Deb King

Committee of Management, Don Dunstan Foundation

Post Conference Drinks

Brought to you by



PREVENTING HOMELESSNESS

#HomelessnessConference @dondunstanfoundation

2019 HOMELESSNESS CONFERENCE

Thank you to our sponsors

#HomelessnessConference @dondunstanfoundation

Presenting Sponsors

ANGLICARE SA

Collaborative Thinking. Positive Outcomes.

CAPITAL CITY
COMMITTEE
ADELAIDE



Government of
South Australia



CITY OF
ADELAIDE



Government of South Australia

Major Sponsors

CENTRE FOR
HOUSING, URBAN AND
REGIONAL PLANNING

 THE UNIVERSITY
of ADELAIDE

 **Flinders**
UNIVERSITY



Government of South Australia
SA Health

 **neami**
national
Improving Mental Health
and Wellbeing

Event Sponsors

 **Bendigo Bank**
Bigger than a bank.

 **Junction**

phn
ADELAIDE
An Australian Government Initiative

UCWB

breaking barriers, building lives
 **UnitingCare**
Wesley Bowden

 **UNITING**
COMMUNITIES


WYATT

Conference resources will be posted on our website at dunstan.org.au