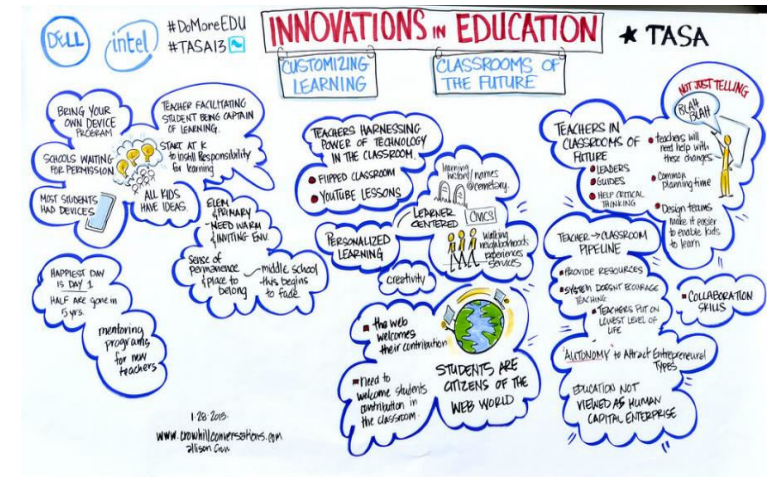


# Flinders New Venture Institute Innovation and Enterprise - IMPACT INNOVATION

Matthew Salier  
Founder and Director  
New Venture Institute

**disruptive** IS THE  
“NEW NORMAL”

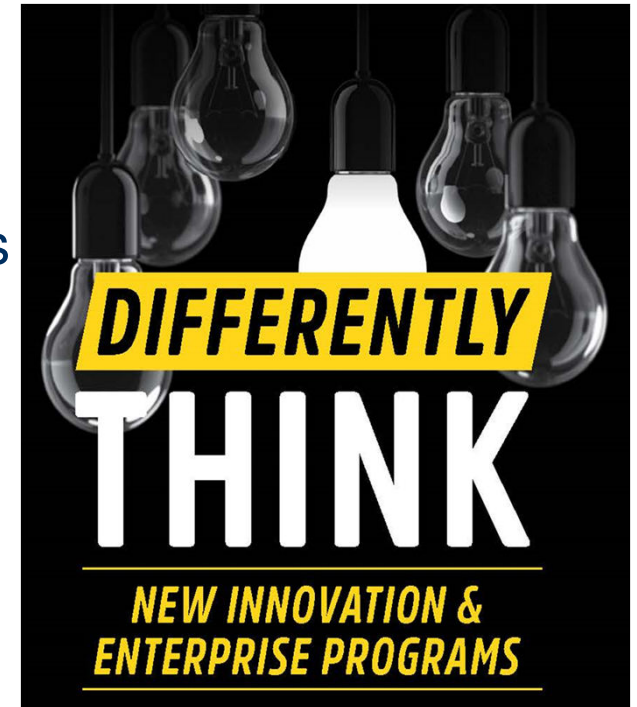


OUR EDUCATION MODEL  
NEEDS TO DELIVER  
BETTER SOLUTIONS AND  
OUTCOMES WITH A  
FOCUS ON THE WHY?

# Progress so far . . .

The first 36 months . . . Startup creation and business innovation

- 184 startups graduated
- 51 SME Innovation Workshops
- 120 SME clients for live projects, in 10 disciplines
- 12 new undergraduate innovation topics live by 2018 (8 in 2017)
- 304 live consulting student teams
- 1,900+ entrepreneurs and innovators trained
- Underlying social impact theme





**THOSE WHO  
DON'T JUMP  
NEVER FLY**





- **Social Impact** through Venture Dorm accelerator program;
- 42% of startups created impact innovation focused, attrition rate half that of other startups;
- Broad areas of focus:  
Sharing economy, mental health, addiction cessation, disability services, environmental management, educational technologies, wellness . . . .and more;
- All creating commercially viable business models with a social mission at their core.
- They have their “tribes”, know their customer/ audience passionately



Supported by  
**Government  
of South Australia**

Department for Communities  
and Social Inclusion



**TECH RANCH**

**SOCIAL BENCHMARK 2015 REPORT**  
TOP SOCIAL INCUBATORS IN THE U.S.

**IPAA 2016** > **INNOVATION  
THROUGH  
COLLABORATION**  
NATIONAL CONFERENCE ADELAIDE, 20-21 OCTOBER

**thankyou.**<sup>TM</sup>

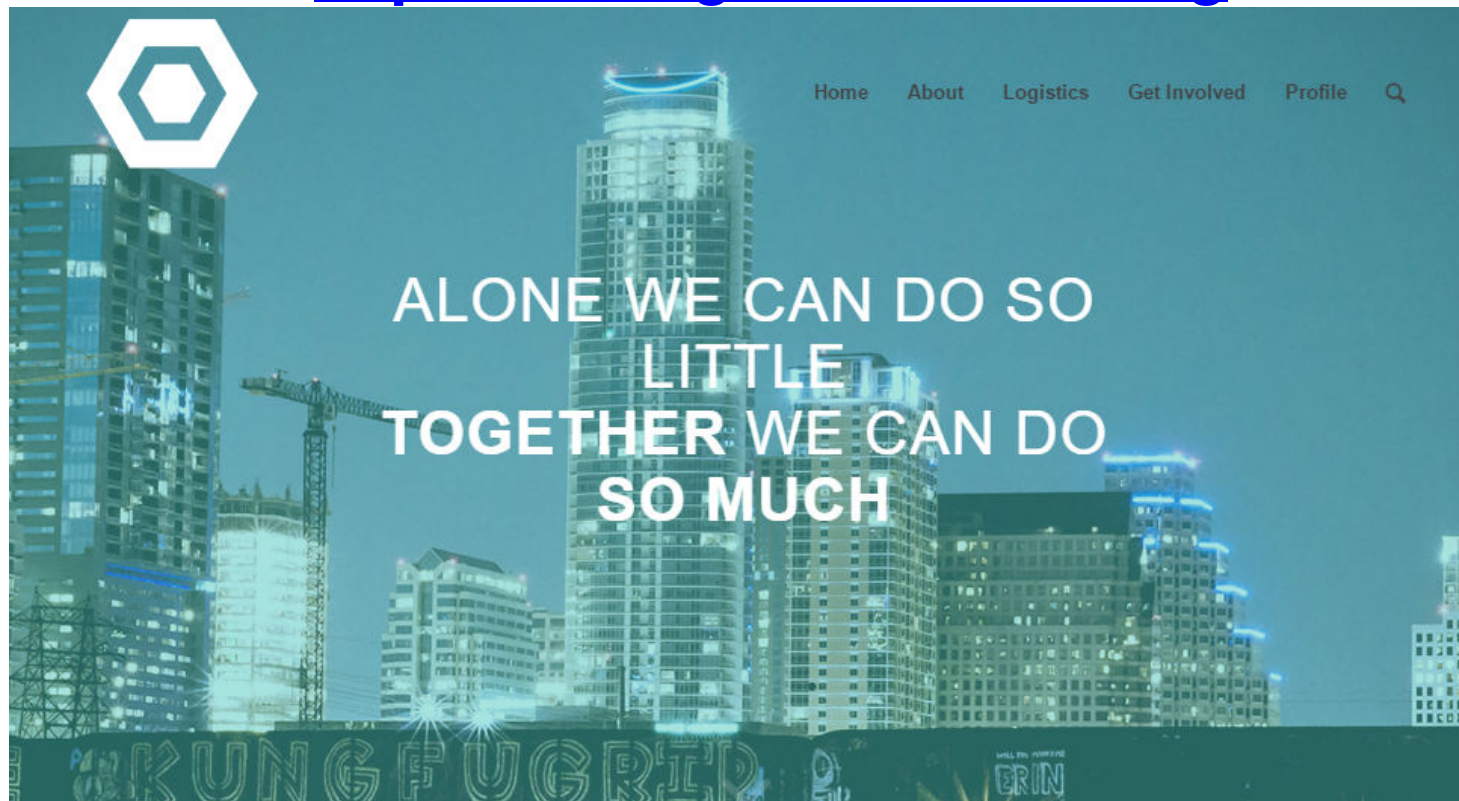




# Impact Through Innovation conference, Austin SXSW 2016

## 4 NVI startups pitched – 2 winners.

[Impactthroughinnovation.org](http://Impactthroughinnovation.org)



THANK YOU FOR YOUR TIME

QUESTIONS OR COMMENTS?

CONTACT DETAILS

Matthew Salier

E: [matt.salier@flinders.edu.au](mailto:matt.salier@flinders.edu.au)

T: + 61 (0)8 8201 7522