

# POPULATION AND MIGRATION POLICY BRANCH

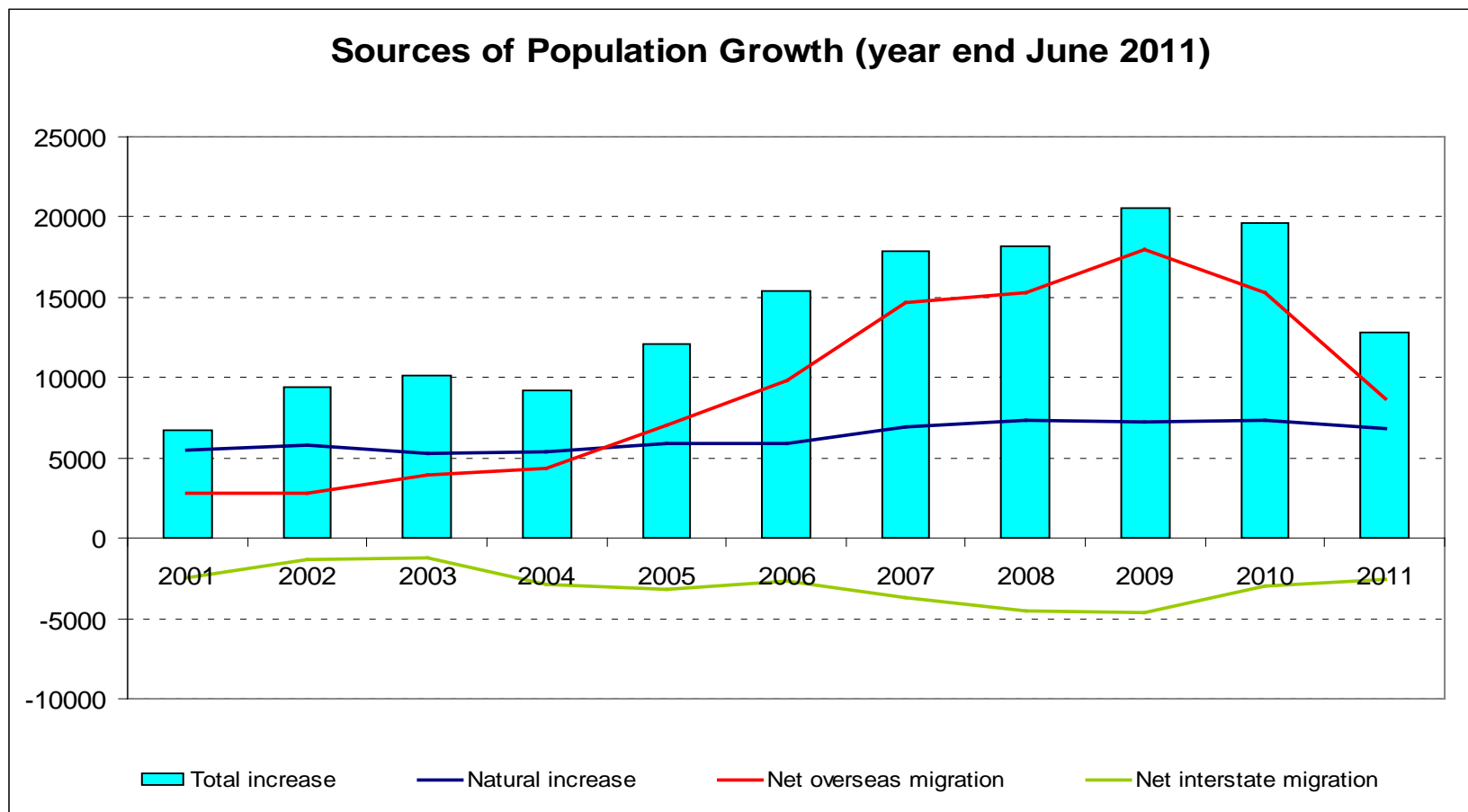


**Government of South Australia**

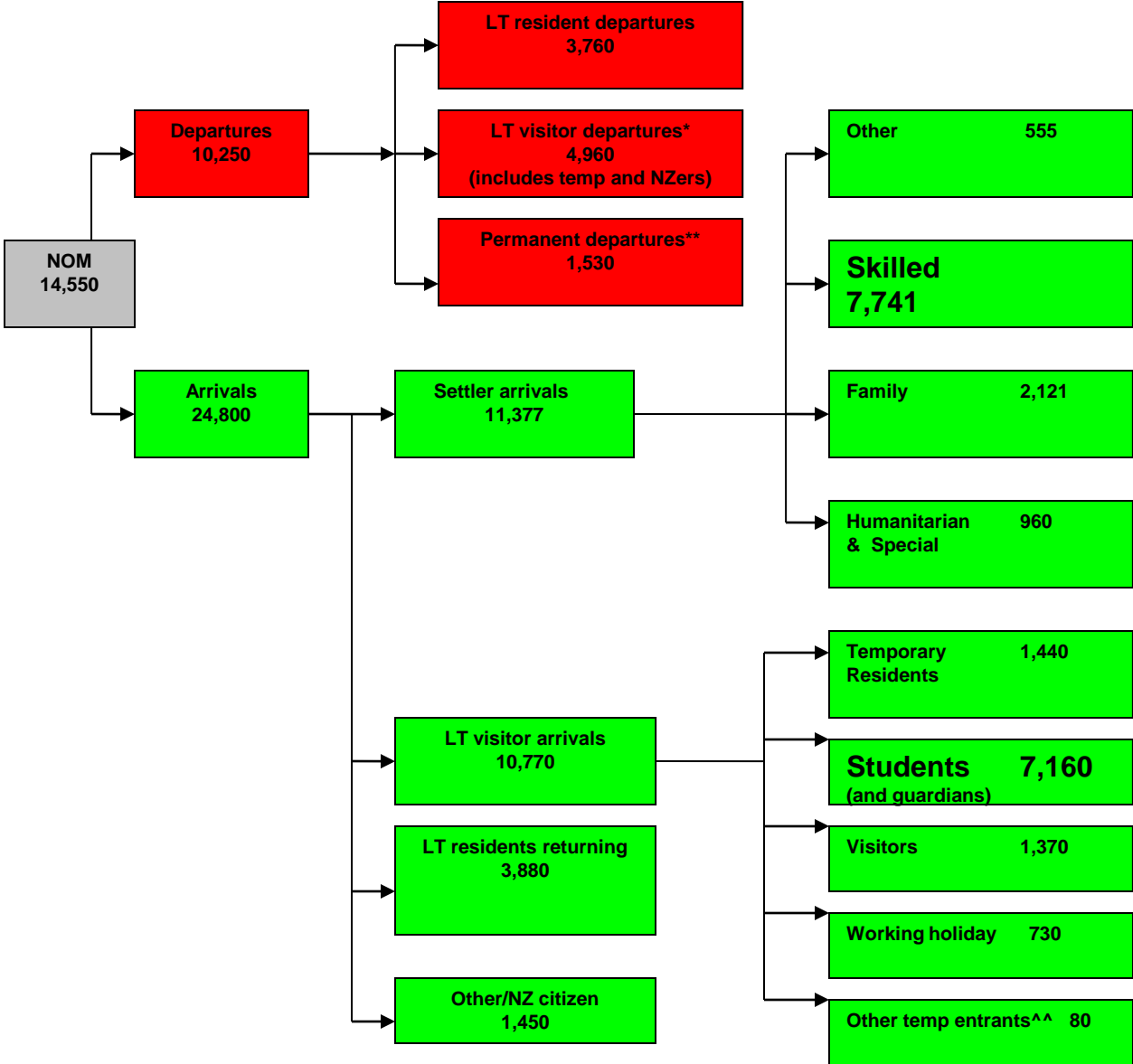
Department of the Premier  
and Cabinet



# Population Growth

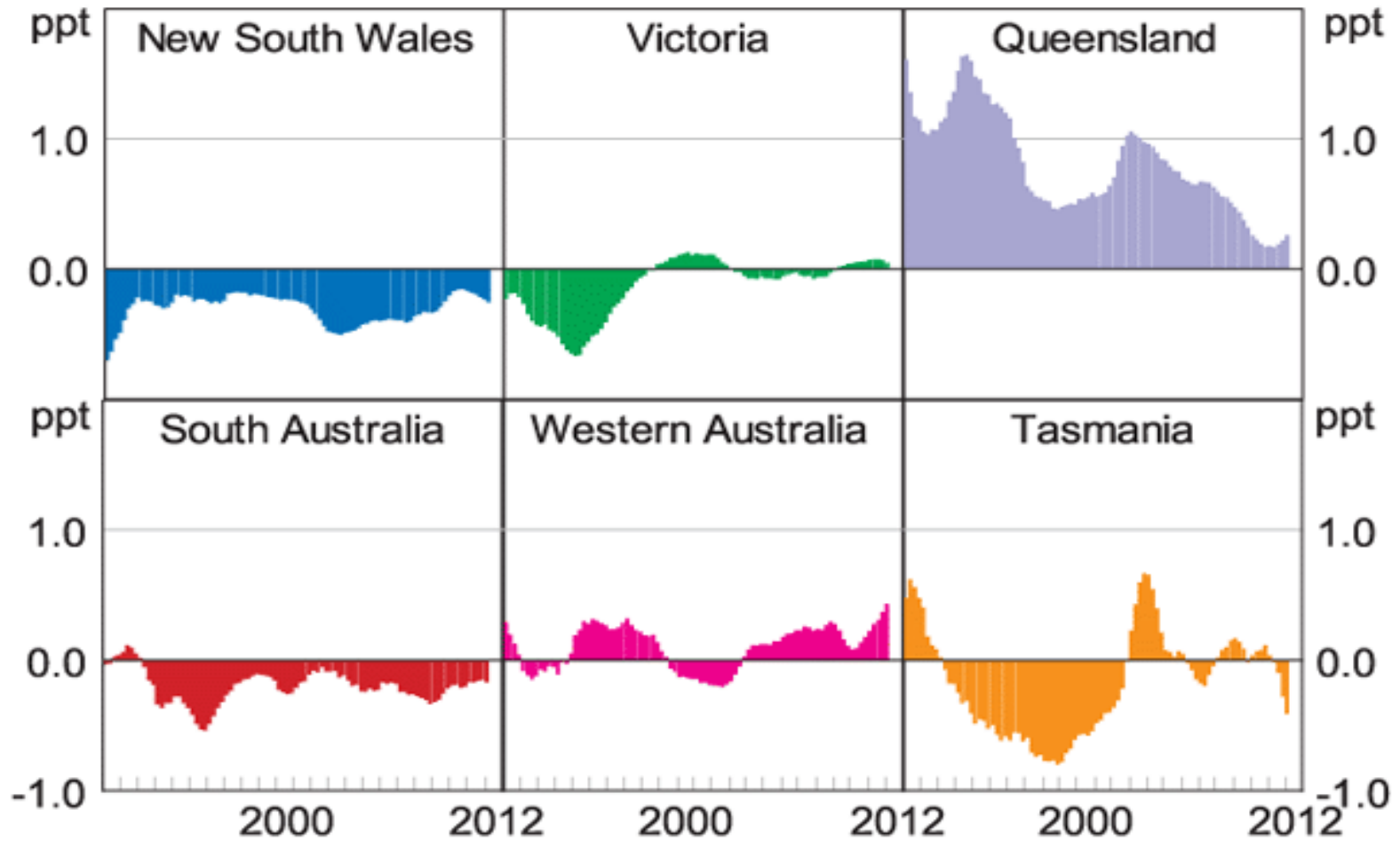


# NOM Flowchart



# Net Interstate Migration

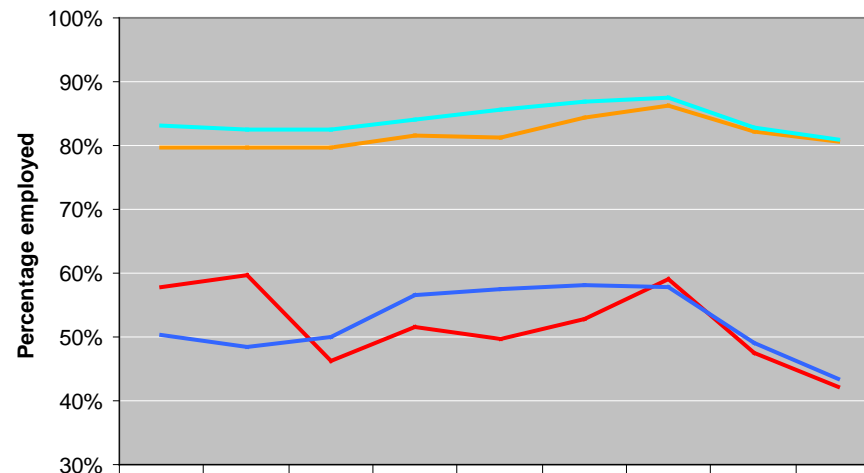
Contribution to year-ended state population growth



Sources: ABS; RBA



# Students employed full-time approximately six months post graduation



	2002	2003	2004	2005	2006	2007	2008	2009	2010
SA International Graduate	58%	60%	46%	51%	50%	53%	59%	47%	42%
SA Domestic Graduate	80%	80%	80%	82%	81%	85%	86%	82%	81%
Aust. International Graduate	50%	48%	50%	57%	57%	58%	58%	49%	43%
Aust. Domestic Graduate	83%	82%	82%	84%	86%	87%	88%	83%	81%



The State's participates in the national skilled migration program to attract skilled migrants through:

1. Participating in State Specific Regional Migration Initiatives
2. Promotion of SA internationally as a destination of choice for skilled migrants

*Only DIAC (Dept of Immigration and Citizenship) can grant visas*



## Immigration SA

- Regional Certify Body for the Employer Sponsored Regional Sponsored Migration Scheme (RSMS) Direct Entry – permanent *Advice*
- General Skilled Migration (GSM) – provisional and permanent *Nomination*
- Business Skills Migration (BSM) - provisional and permanent *Nomination*





## Source countries

Top three Source Countries across state specific programs.

India

United Kingdom

China



# Attraction and Retention of Migrants

## Attraction and Promotion

1. Strategic Vision
2. Marketing Unique Features of the Area
3. Information!

## Retention

1. Importance of Settlement Experience
2. Accessibility and Availability of Services



## Migration Policy – Recent Developments

1. Introduction of *SkillSelect*
2. Business Innovation and Investment Program
3. ENS/RSMS changes
4. Labour Agreements
5. State and Territory Migration Plans
6. Immigration SA's role in Employer-Sponsored Migration
7. IMAs
8. Humanitarian and Refugees
9. 457s

# Benefits of SkillSelect

Respond quickly to changing economic needs

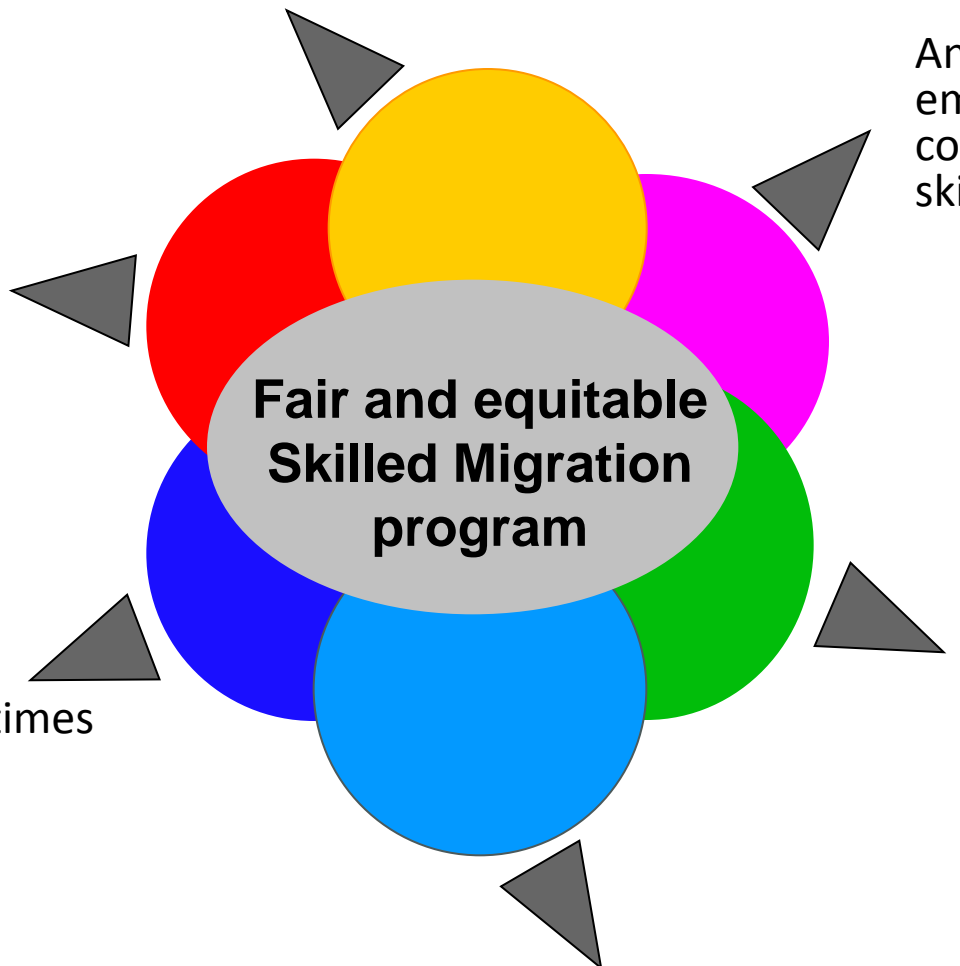
Meet Australia's skill needs

Minimise processing times

Allocate independent places to the best and brightest

An additional facility for employers to search and contact prospective skilled workers

Streamline and optimise State and Territory migration plans.



**Fair and equitable  
Skilled Migration  
program**



## PMP Branch: strategic priorities

1. Focus on Strategic Priorities
2. Regional Migration Status for South Australia
3. State Settlement Framework
4. State and Territory Migration Plan
5. Monitoring, Evaluation and Support for State's Migration Programs



**Government of South Australia**

Department of the Premier  
and Cabinet



**Questions?**