

REACHING FUNCTIONAL ZERO: **A PROBLEM-SOLVING SYSTEM TO END HOMELESSNESS**

August 17, 2017

COMMUNITY
SOLUTIONS



Who We Are

COMMUNITY SOLUTIONS

deploys the best problem solving tools
from multiple sectors to help communities **end homelessness**
and the conditions that create it.

Core elements of a problem-solving system

Clear end state

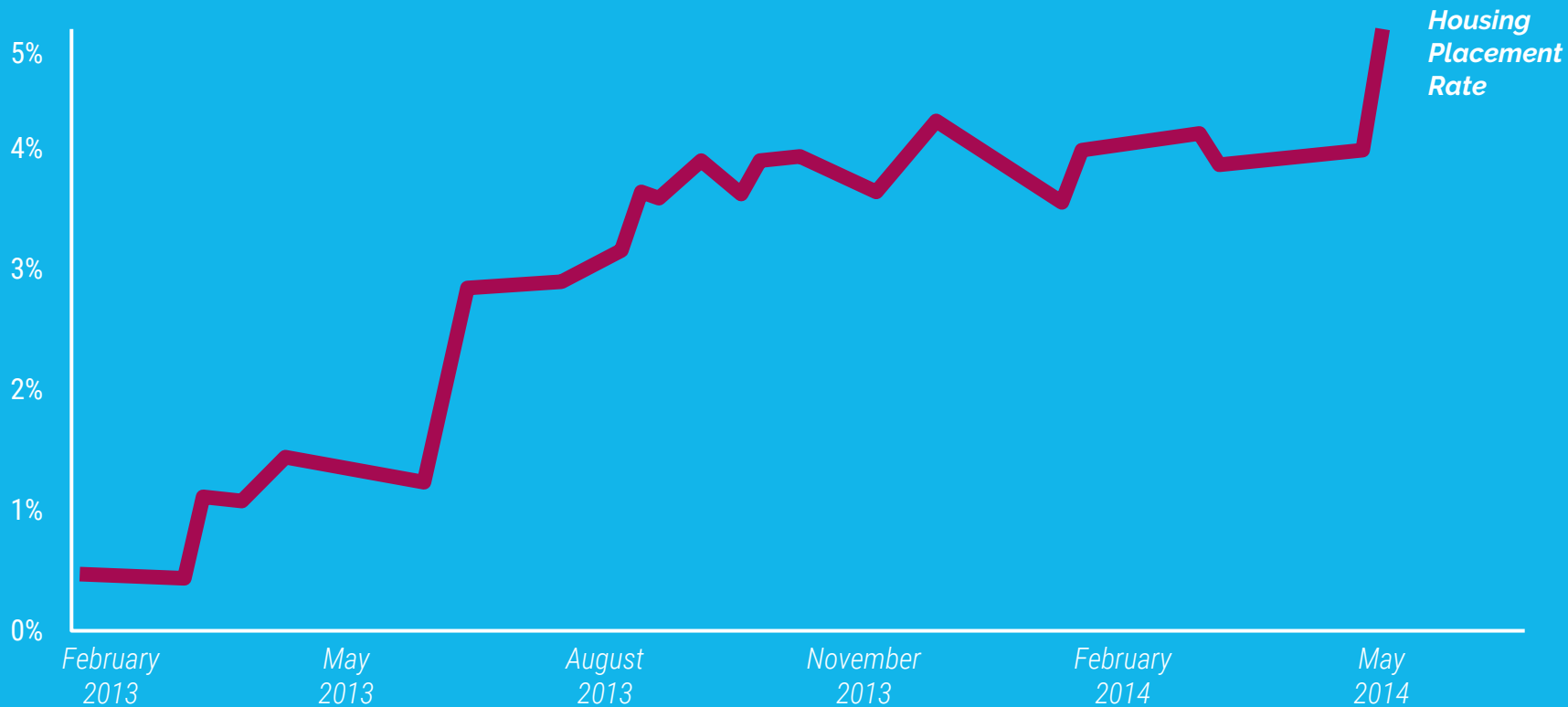
Rapid feedback loop

Flexible arsenal of
strategies

Command center
approach



Average Housing Placement Rate



www.100khomes.org

101,628
PEOPLE HOUSED

**100,000
HOMES** | COMMUNITY
SOLUTIONS

www.100khomes.org

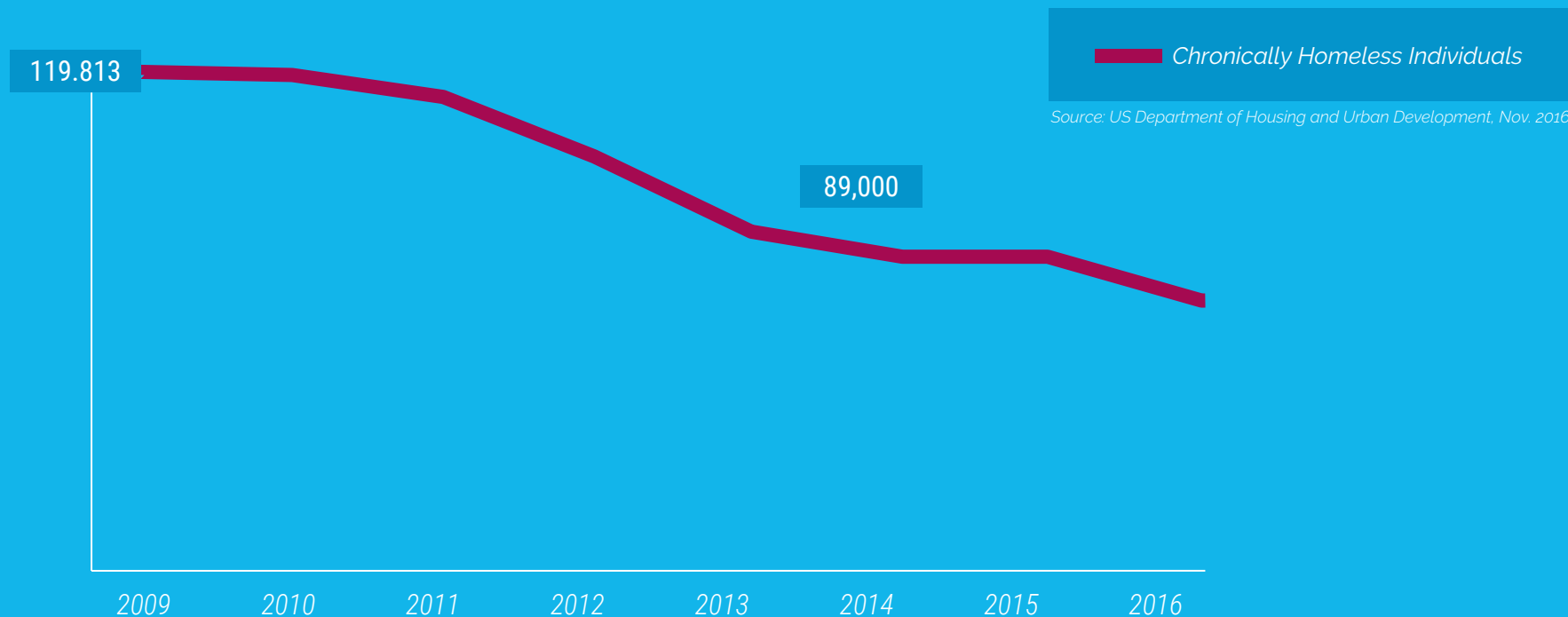
**WE CAN END
HOMELESSNESS**

**100,000
HOMES** | COMMUNITY
SOLUTIONS

**100,000
HOMES** | COMMUNITY
SOLUTIONS

**100,000
HOMES** | COMMUNITY
SOLUTIONS

US Decreases in Chronic Homelessness

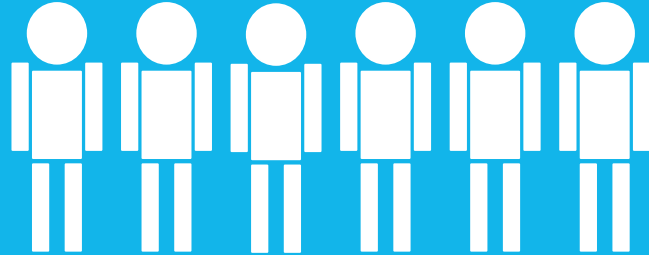


Functional Zero: Veterans

**# Veterans
Actively Homeless**

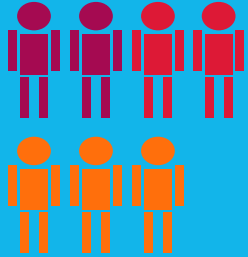


**Average Monthly Housing
Placement Rate**

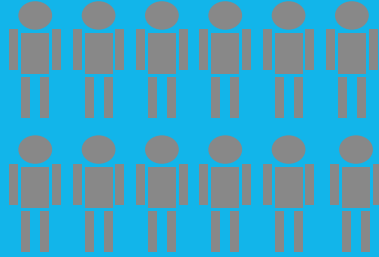


Six Key Data Points

INFLOW



ACTIVELY HOMELESS



OUTFLOW



INFLOW:
NEWLY
IDENTIFIED



INFLOW:
RETURNED FROM
HOUSING



INFLOW:
RETURNED FROM
INACTIVE

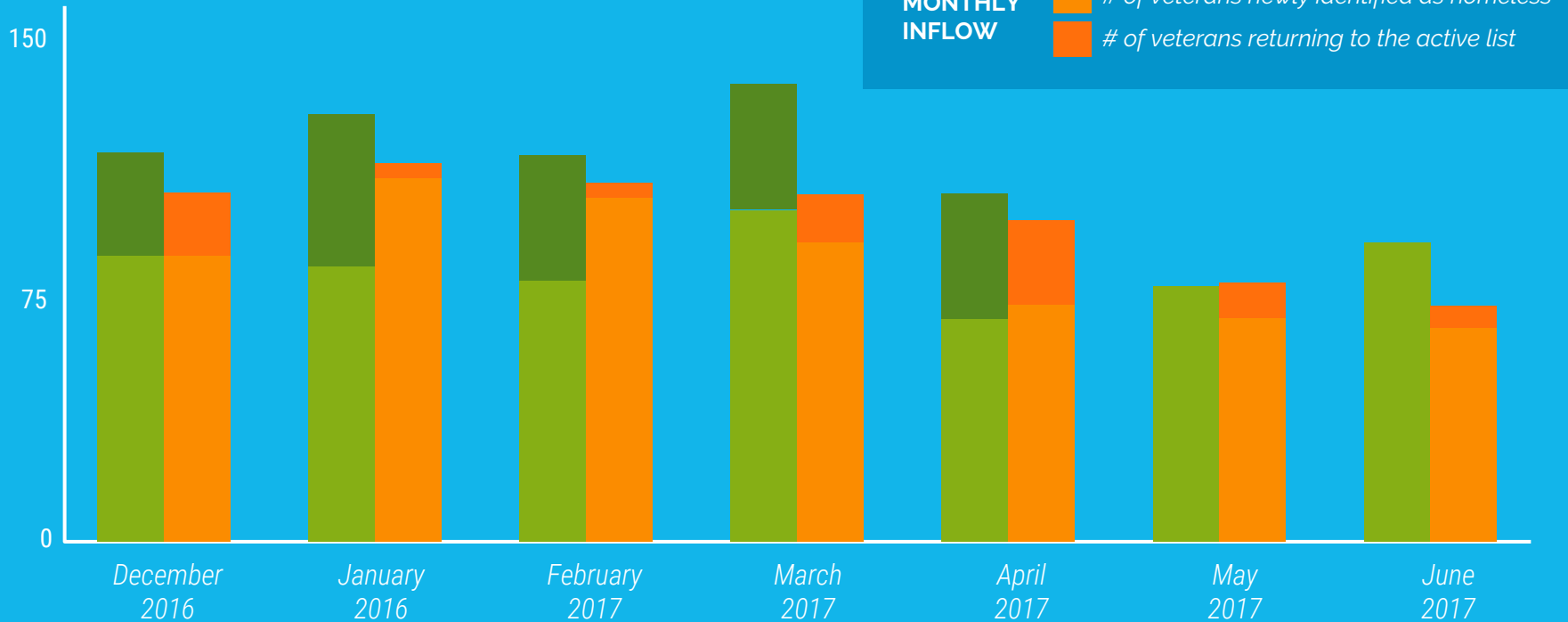


OUTFLOW:
HOUSING
PLACEMENTS

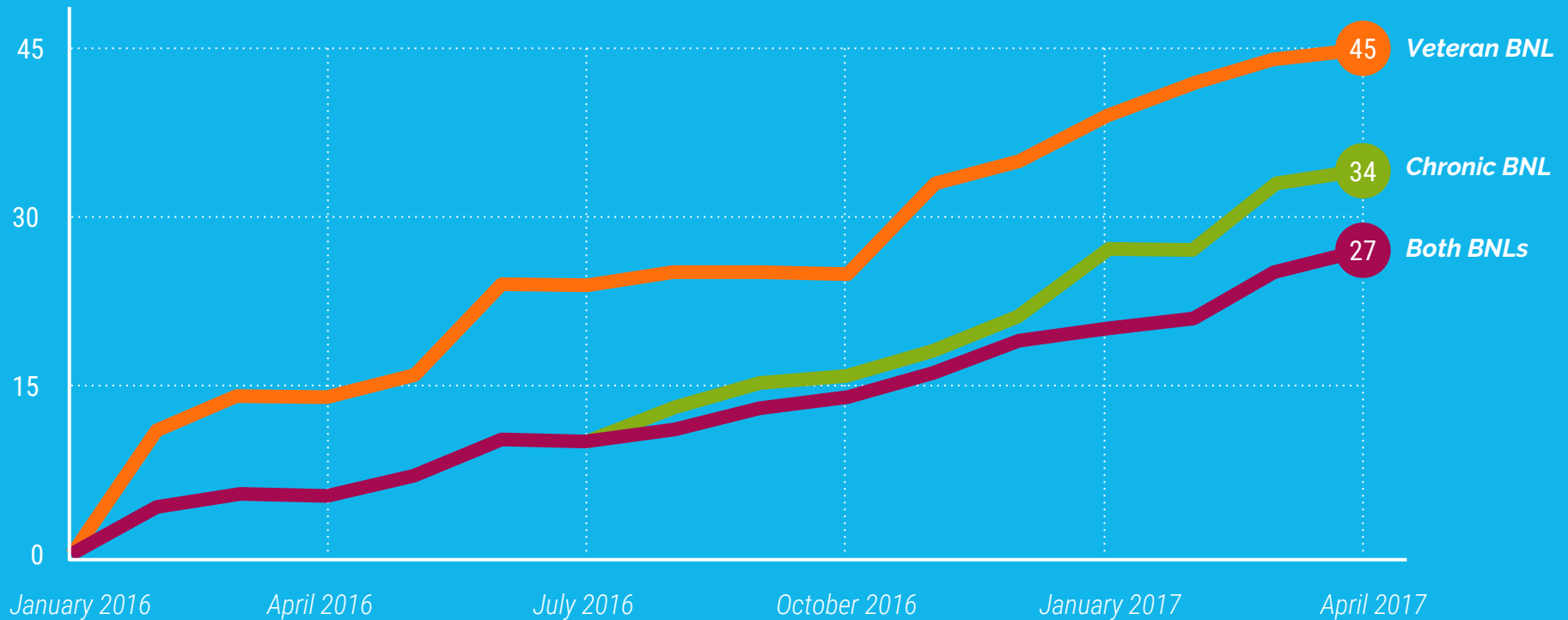


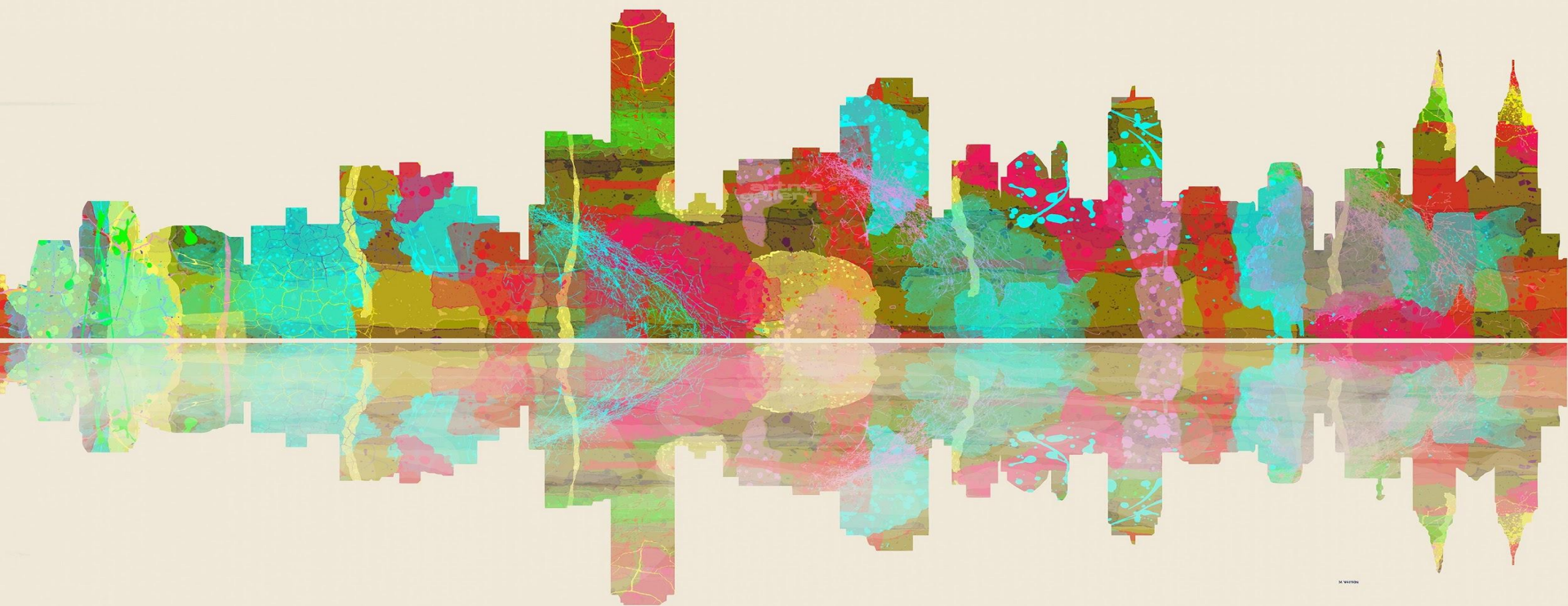
OUTFLOW:
MOVED TO
INACTIVE

System Dynamics



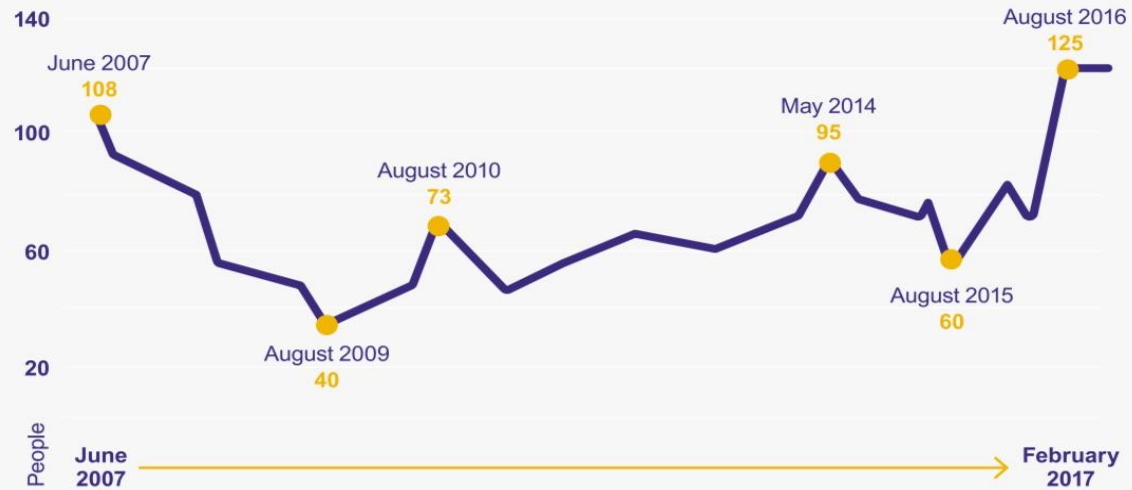
The By-Name List Revolution

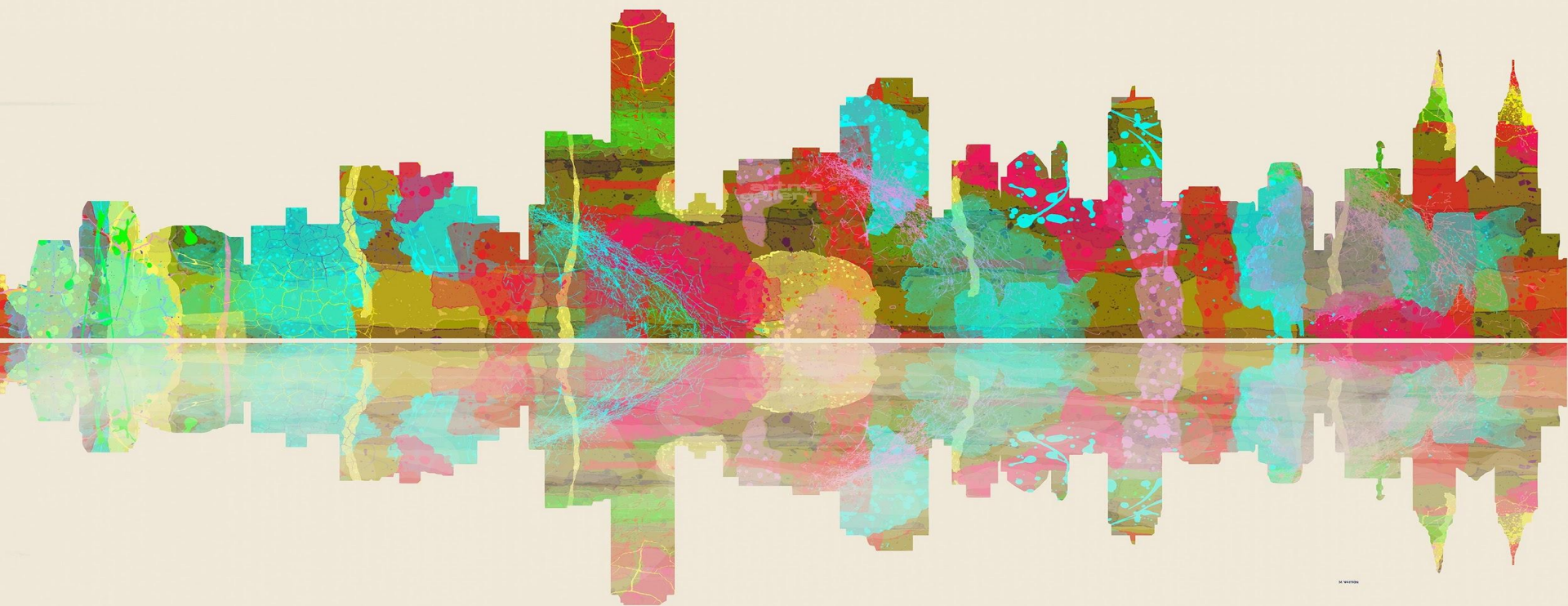




Rough Sleeping in Adelaide

Adelaide inner city rough sleeper street count 2007—2017





Thank you

jmaguire@community.solutions