

# STATE of SOUTH AUSTRALIA

## Trends and Issues 2006 Update

Australian Institute for Social Research  
Don Dunstan Foundation

### POPULATION UPDATE Graeme Hugo

#### Introduction

In the period since the State of South Australia was published the issue of population has assumed increased significance. The population chapter in that volume was written around the time that the South Australian government released its population policy (Government of South Australia, 2004). The two years that have passed have seen some significant shifts in the processes of population influencing the State.

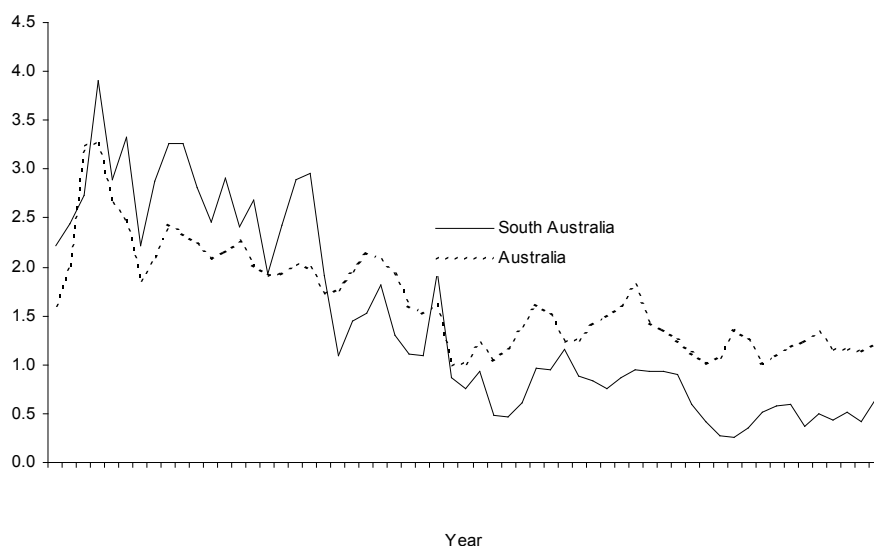
While the full picture of the nature and direction of contemporary population change in the State will be revealed when the results of the 2006 Census enumeration conducted on August 8, 2006 become available it is apparent that there has been substantial change over the last two years. The State Government included three population elements among the 19 targets in Objective One of the South Australian Strategic Plan – Total Population, Interstate Migration and Overseas Migration. These were assessed by South Australia's Strategic Plan Audit Committee (2006) as follows ...

- Total Population – unclear – measurement is problematic
- Interstate Migration – category 4 – little/no/negative movement made on the target
- Overseas Migration – category 2 – on track to meet the target in the timeframe

#### Update of Key trends

As Figure 1 shows there has been an upturn in the rate of annual population growth rate in South Australia. The most recent quarterly estimates published by the ABS (2006a) showed the highest population gain for South Australia since estimates began in January 1981 – 4,875 persons. Moreover the net gain over the April 2005 – March 2006 year was 11,900 – 0.8 percent – the highest annual rate of net gain since 1991. A decade ago in 1994-95 the annual population growth was 3,291 (0.22 percent). Table 1 shows that South Australia currently has 1,552,300 residents or 7.55 percent of the national population.

Figure 1: Australia and South Australia: Rate of Population Growth per Annum, 1947-2005



**Table 1: Australia: Population Change by State 2006**

	Population at end March qtr 2006 '000	Change over previous year '000	Change over previous year (%)	Percent of national population (b)
New South Wales	6,817.1	56.9	0.8	32.8
Victoria	5,078.5	65.7	1.3	24.8
Queensland	4,035.7	80.2	2.0	19.7
South Australia	1,552.3	11.9	0.8	7.6
Western Australia	2,042.8	38.6	1.9	10.0
Tasmania	488.7	3.6	0.7	2.4
Northern Territory	205.9	3.6	1.8	1.0
Australian Capital Territory	328.1	2.4	0.8	1.6
Australia	551.9	263.2	1.3	100.0

(a) Includes Other Territories

(b) As a percent of national population excluding Other Territories

Source: ABS 2006a

The demographic components of recent population change are presented in Table 2. This shows that natural increase (births minus deaths) added 5,824 to the state population in 2005-06, somewhat higher than in calendar 2004 (5,241) but less than

2004-05 (5,832) which was the highest level of natural increase since 1999-2000. Mortality levels have continued to improve in South Australia along with the rest of Australia. Indeed despite the ageing of the State's population (Hugo 2002).

**Table 2: South Australia: Components of Population Change 1996-2006**

YEAR	NATURAL INCREASES	NET MIGRATION	NET OVERSEAS MIGRATION	NET INTERSTATE MIGRATION
1996-97	6,951	-1,524	3,104	-4,628
1997-98	6,602	1,194	3,160	-1,966
1998-99	6,751	1,051	2,682	-1,631
1999-2000	6,306	298	3,829	-3,531
2000-01	5,495	347	2,765	-2,418
2001-02	5,772	1,196	2,798	-1,602
2002-03	5,198	2,407	3,904	-1,497
2003-04	5,318	1,108	4,305	-3,197
2004-05	5,832	3,231	7,020	-3,483
2004 (Calendar Year)	5,241	1,146	5,071	-3,789
2005 (Calendar Year)	5,989	4,156	8,548	-3,569
2006 (April-March)	5,824	6,203	8932	-2,729

Source: ABS 2002, p. 11-12; ABS 2006a 10, 11

**Table 3: South Australian Mortality, 1998-2005**

YEAR	NUMBER	STANDARISED DEATH RATE
1998-99	11,648	7.13
1999-2000	11,590	6.91
2000-01	11,919	6.9
2001-02	11,807	6.65
2002-03	12,088	6.64
2003-04	11,931	6.39
2004-05	11,281	5.85
2004 (Calendar Year)	11,541	na
2005 (Calendar Year)	11,985	na

Source: ABS 2002, 23 and ABS 2006b, 23

Table 3 shows that there was a fall in the number of deaths recorded in the state between 2003-04 and 2004-05 although a small increase was recorded between calendar 2004 and 2005. Nevertheless it can be expected that over the next two decades the gap between births and deaths will gradually close as fertility remains low and the proportion of the State's population in the oldest age groups increases. South Australia's mortality levels remain below the national average levels.

The births side of the natural increase equation is of critical significance. There has been some recent debate about births data in Australia (ABS 2005a) and in recent years there has been an under-registration of births in Australia which McDonald (2005) argues may have been sufficient to explain an apparent small decline in the Total Fertility Rate in Australia over the last decade. The recent data for South Australia is presented in Table 4. For some years it has been anticipated that there would be an increase in births as the children of baby boomers enter the childbearing age groups. However it is apparent that this generation is delaying their childbearing longer than any other generation in recent history. The recent increase in the number of births in Australia (from 246,576 in 2001 to 261,404 in 2005) has been attributed to this echo of baby boom factor (McDonald 2005). Nevertheless it will be noted that Australia had only 6.8 percent of the national births – below its proportion of the population. This is due to its older age structure and slightly lower fertility level.

**Table 4: South Australia: Births, 1999-2000 to 2004-05**

YEAR	NUMBER OF BIRTHS	BIRTHS AS % OF NATIONAL TOTAL
1999-2000	17,896	7.18
2000-01	17,414	7.04
2001-02	17,579	7.10
2002-03	17,286	6.99
2003-04	17,249	6.84
2004-05	17,356	6.73
2004 (Calendar Year)	16,770	6.57
2005 (Calendar Year)	17,770	6.80

Source: ABS 2006a, 22

The number of births shown in Table 4 is not just a function of the fertility of South Australian women but the number of women in the various childbearing age categories (i.e. age structure). Hence it is important to control for age structure in measuring fertility and Table 5 presents estimates of the Total Fertility Rate in South Australia and Australia since 1990. It shows that there has been relative stability in the South Australian fertility rate over this period and a convergence of the State level toward the national level over that period. It would seem that an end has come to the long period over which South Australian fertility has been the lowest of any State. In fact the State's fertility has been so far below the national average that the ABS has had to employ different fertility assumptions for South Australia in its projections than for Australia as a whole.

**Table 5: South Australia and Australia: Total Fertility Rates, 1990 to 2005**

YEAR	SOUTH AUSTRALIA	AUSTRALIA
1990	1.748	1.908
1991	1.728	1.855
1992	1.703	1.893
1993	1.787	1.964
1994	1.744	1.846
1995	1.761	1.844
1996	1.725	1.777
1997	1.717	1.789
1998	1.704	1.757
1999	1.729	1.763
2000	1.698	1.754
2001	1.675	1.739
2002	1.709	1.732
2003	1.697	1.727
2004	1.708	1.756
2005	1.731	1.797
Percent Change 1990 - 2005	-0.973	-5.818

Source: ABS Australian Demographic Statistics various issues and ABS Historical Population Statistics, 2006, <http://www.abs.gov.au/AUSSTATS/abs@nsf/DetailsPage/3105.0.65.0012006?OpenDocument>

Turning to interstate migration, Table 6 shows that there has been a continuation of significant net losses to other states and territories. There is little evidence of a reduction in net interstate migration losses with a net loss of 3,599 being estimated by the ABS for Calendar 2005. While one must examine data for a single quarter with a high degree of caution, the latest quarterly estimates of net interstate migration loss show a decline. Net interstate migration losses for SA in the March Quarter in 2004 were -1,018 and in 2005 were -1,082 but in 2006 they were much lower at -242.

**Table 6: South Australia: Net Interstate Migration**

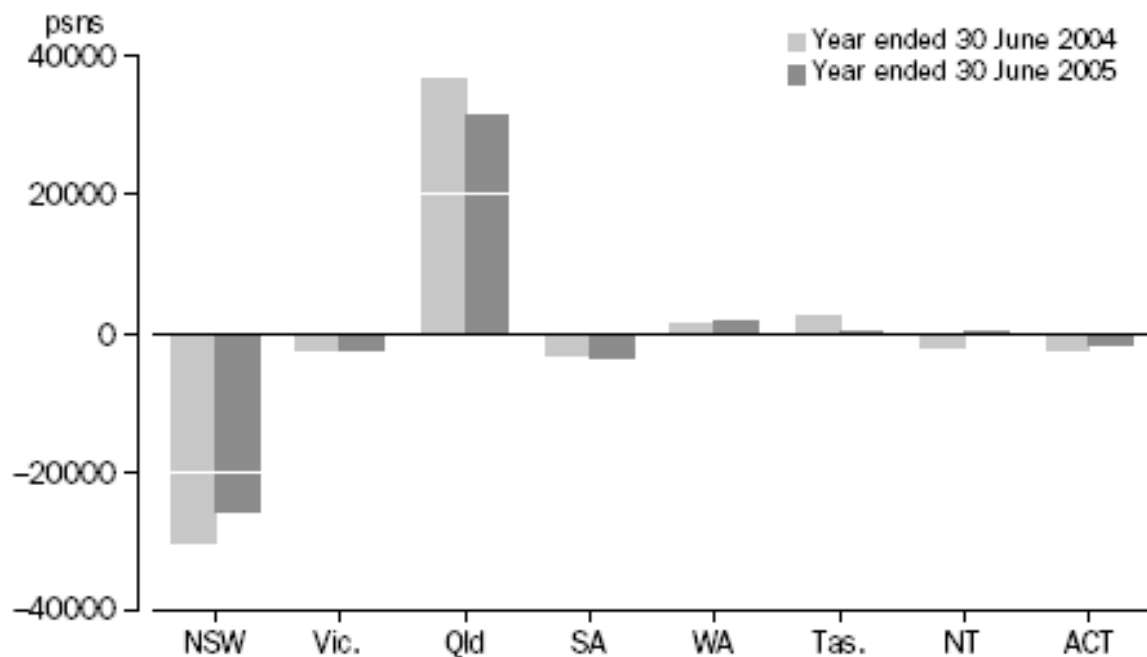
YEAR		MARCH QUARTER
1999-2000	-3,531	-1,735
2000-01	-2,418	-821
2001-02	-1,602	-529
2002-03	-1,497	-513
2003-04	-3,197	-1,081
2004-05	-3,483	-1,082
2004 (Calendar Year)	--3,789	-1,018
2005 (Calendar Year)	-3,569	-1,082
2005-2006 (April-March)	-2,729	-242

Source: ABS 2001, 2003, 2006a

The net losses do need to be put in perspective to the situation in other states and Figure 2 shows that South Australia's net losses are small compared to those for New South Wales while overwhelmingly the net gains have been in Queensland. The key point is that the net losses are highly selective of particular groups ...

- young adults aged 15-29, especially young women;
- to a lesser extent those aged 40-64;
- singles and couple families;
- overseas born (especially those born in Mainly English Speaking Countries) were over-represented, most of them had been in Adelaide a fairly long time.
- the largest net outflows were of professionals, managers, sales and service workers and clerks;
- there were substantial net losses of those in the middle (\$30,000-\$50,000 per annum) and high income groups (more than \$50,000) and gains of households earning below \$14,000 per annum.

**Figure 2: States and Territories: Net Interstate Migration**



Source: ABS 2005b

Perhaps the greatest change over the last two years has been in the area of international migration. Table 7 shows that net international migration gains have more than doubled in the last couple of years. Indeed the figure of 8,548 for Calendar 2005 is the highest net gain in the state for more than two decades. Moreover, Table 7 shows that the proportion of the national net migration intake settling in South Australia reached 6.3 percent in 2005 – a higher proportion than at any time since the first half of the 1970s. Again it is dangerous to place too much store on quality figures but Table 7 shows that in the March 2006 quarter South Australia accounted for 7.5 percent of the national migrant intake – i.e. in proportion to the State’s share of the national population.

Table 7 shows the most recent net migration estimates available for the State but it is possible to look at immigrant arrivals for a more recent period – up to the end of the financial year 2005-06. These data cannot be compared to the net migration statistics in Table 7 because they ...

- do not take account of emigration overseas
- it does not include “on shore” migrants – i.e. those who were in Australia as temporary residents but applied for, and obtained, permanent residence. Such “onshore” migrants made up 26.2 percent of the total national intake of immigrants in 2004-05.

**Table 7: South Australia: Net Overseas Migration**

YEAR		% OF ALL AUSTRALIAN NET GAIN	MARCH QUARTER	% OF ALL AUSTRALIA
1999-2000	3,829	3.6	662	2.8
2000-01	2,765	2.0	1276	2.3
2001-02	2,798	2.5	1665	3.3
2002-03	3,904	3.4	2827	4.7
2003-04	4,305	4.3	1480	4.2
2004-05	7,020	5.7	3138	6.7
2004 (Calendar Year)	5,071	4.8	1480	4.2
2005 (Calendar Year)	8,548	6.3	3138	6.7
2006 (April-March)	8932	6.6	3422	7.5

Source: ABS 2001, 2003, 2005b, ABS 2006a, 10

Table 8 shows the number of settler arrivals coming to South Australia in the year 2005-06. It will be noted that between 2004-05 and 2005-06 the numbers of arrivals destined for SA

increased by almost 50 percent to reach 9,099 more than at any time since 1973-74. The State's

**Table 8: South Australia: Settler Arrivals, Composition and Growth, 2002-03 to 2005-06**

	3.902/03		03/04		04/05		05/06	
	No.	%	No.	%	No.	%	No.	%
Skilled	1239	3.7	2176	4.7	2871	5.9	5383	9.7
Business	93	1.7	102	2.0	449	9.3	5383	14.3
Humanitarian	686	7.2	844	8.2	1196	9.0	604	8.8
Family	1243	4.4	1240	4.2	1339	4.0	1072	4.3
Special	21	11.8	11	5.3	19	11.7	1502	9.6
Other	375	2.1	400	2.0	490	2.0	10	2.1
Total	3657	3.9	4773	4.3	6364	5.2	528	6.9

Source: DIMA unpublished data

share of national settler arrivals increased from 5.2 to 6.9 percent. It is interesting that virtually all of the increase was in the skilled and business categories. The number of skilled migrants to the State almost doubled over the year! This is a product of the highly active South Australian participation in the State Specific and Regional Migration (SSRM) initiatives. This set of visa categories introduced progressively over the last decade give particular advantages such as extra points or

waiving of particular conditions to potential settlers willing to settle outside of the major areas of immigrant settlement. The categories have varying residence requirements as are shown in Table 9. It will be noted that SA as a whole (including the Adelaide metropolitan area) is eligible for virtually all categories. This partly reflects the fact that the State has been among the most

**Table 9: Locational Requirements for Selected Visa Subclasses**

SKILL MATCHING (SUBCLASS 134)	INDEPENDANT (STNI) (SUBCLASS 137)	AREA SPONSORED (SDAS) (SUBCLASS 139 AND 882)	INDEPENDANT REGIONAL (SIR) (SUBCLASS 495)	SPONSORED MIGRATION SCHEME (RSMS) (SUBCLASS 119)
If the applicant is nominated by a State or Territory Government they currently may settle in South Australia, Western Australia, Victoria or Tasmania (as per STNI). If they are nominated by a regional employer all areas of Australia are covered except Sydney, Newcastle, Wollongong, Melbourne, Perth, Brisbane and the Gold Coast (as per RSMS).	South Australia, Tasmania and Victoria.	Designated areas are identified by individual State and Territory Governments. Currently all parts of Australia except Sydney, Newcastle, Wollongong, Melbourne, Perth, Brisbane are designated areas.  The sponsoring relative must have lived in a designated area of Australia for at least twelve months.  From 1 July 2006, migrants who enter under the Skilled Designated Area Sponsored category will be required to live in the same area as their sponsor for a minimum of two years before obtaining permanent residence	All areas of Australia are covered except Sydney, Newcastle, Wollongong, NSW Central Coast, Melbourne, Perth, Canberra, Brisbane and the Gold Coast.  After two years living and 12 months employment (including self employment) in regional area can apply for permanent residence under RSMS, STNI or State/ Territory Business Owners visas.	SIR visa holders may apply for permanent residence under this visa subclass after relevant time periods served.  All areas of Australia are covered except Brisbane, the Gold Coast, Newcastle, Sydney, Wollongong, Melbourne and Perth.

the scheme but also that it has greatly increased its share of the SSRM immigrants since 2002-03 and now accounts for almost a third of the total SSRM program. Figure 3 shows that the

regional migration scheme was much more important in South Australia immigration than in any other state in 2005-06.

**Table 10: Number of Immigrants with Visas Granted Under the State Regional Specific Migration Mechanisms and Their Proportion of the Total Non Humanitarian Intake 1997-98 to 2005-06**

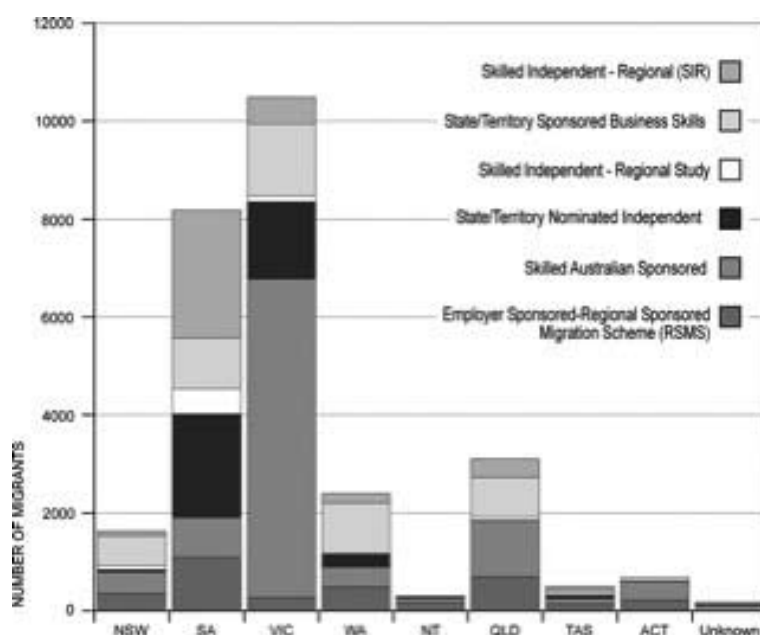
YEAR	NUMBER	PARCENT OF TOTAL NON HUMANITARIAN INTAKE	PERCENT IN SA
1997-98	1753	2.3	34.5
1998-99	2804	3.3	36.9
1999-2000	3309	3.6	21.2
2000-01	3846	3.6	19.5
2001-02	4136	4.6	17.5
2002-03	7941	8.5	16.7
2003-04	12725	11.4	16.6
2004-05	18700	15.6	26.5
2005-06	27488	19.2	29.8

Source: DIMIA Population Flows: Immigration Aspects, various issues; DIMIA Immigration Update, various issues; DIMA unpublished data

The origins of settlers are shown in Table 11 and it is especially interesting that almost a third of all settler arrivals are from the UK. This compares to 21.4 percent in 2002-03. The UK has traditionally been the main source of immigrants to SA (Hugo

1989) and UK immigrants disproportionately settled in SA in the postwar economic boom years but its return to dominance is interesting. The rapid growth of the second and third largest group from India and China is also significant.

**Figure 3: State Specific and Regional Migration Initiatives : Outcomes of Different Visa Categories by State and Territory, 2005-06**



Source: DIMA

**Table 11: South Australia: Settler Arrivals, Top 10 Countries, 2002-03 to 2005-06**

COUNTRY	02/03	03/04	04/05	05/06	PERCENT INCREASE 04/05 - 05/06
United Kingdom	785	1269	1725	3009	74.4
China	113	208	513	879	71.3
India	138	243	404	909	125.0
Sudan	188	363	407	248	-39.1
New Zealand	232	266	327	373	14.1
South Africa	209	317	253	263	4.0
Phillipines	134	147	161	285	77.0
Afghanistan	57	98	100	373	273.0
Vietnam	130	110	97	155	59.8
Malaysia	91	132	112	154	27.3
Other	1580	1620	2265	2451	8.2
Total	3667	4773	6364	9099	43.0

Source: DIMA unpublished data

While the focus in recent immigration efforts in SA has been on skilled migrants, South Australia has been an important destination for refugee-humanitarian migrants even before the recent increase in the overall intake. The State has taken more than its proportionate share of refugee-humanitarian migrants. In 2005-06 South Australia settled 1,072 (or 8.85 percent)

of "offshore" arrivals in this group and 447 (9.21 percent) of "onshore" arrivals or persons who arrived as Asylum Seekers but were granted resident status. The refugees are dominantly from the Horn of Africa and Afghanistan and are increasing the diversity of the State's population. Table 12 shows the main countries of origin of recent humanitarian arrivals and the dominance of Middle Eastern and African groups is apparent.

**Table 12: South Australia: Top 10 Countries of Birth of Humanitarian Entrants (all categories), 2001-06**

COUNTRY OF BIRTH	2001-02	2002-03	2003-04	2004-05	2005-06	TOTAL
Sudan	107	255	437	531	250	1580
Afghanistan	339	95	128	71	319	952
Iraq	172	118	78	24	55	447
Iran	93	71	90	56	34	344
Liberia	15	49	24	160	96	344
Former Yugoslavia	169	108	36	11	0	324
Kenya	4	29	41	112	59	245
Burundi	6	0	10	61	101	178
Ethiopia	18	21	53	55	9	156
DR Congo	0	1	13	108	16	138

Source: DIMA 2006

One of the most important changes in Australian immigration over the last decade has been the increase in non-permanent migration. This represents a parametric shift from the Australian immigration policy imperative of the half century

following World War II which eschewed temporary worker migration in favour of focussing on permanent settlement. Elsewhere it has been shown (Hugo 1999; 2006) that there has been significant growth since 1995 in the numbers coming to

Australia and being granted temporary residence in order to work. There has been particular growth in ...

- Temporary business migrants
- Students
- Working holiday makers

The temporary residents who intend to stay in Australia for more than one year are picked up as long term arrivals by DIMA and Table 13 shows that there has been a steady increase

in non-permanent long term migration to South Australia in recent years as is evident in Table 13. The substantial growth in the Temporary Residents (including 457s) and students is especially significant since these two groups are the most likely to convert to permanent residence. Hence, these data suggest that South Australia may gain more "onshore" migrants in future years than was the case previously. Table 14 shows that Europe (mainly the UK) accounts for a third of these. South Africa is an important source as are China and other Eastern and Southeastern Asian nations.

**Table 13: South Australia: Long Term Visitor Arrivals, 2005-06**

	TEMPORARY RESIDENTS	STUDENT	VISITORS	TOTAL
2002-03	1,439	5,001	477	6,917
2003-04	1,741	6,200	274	8,215
2004-05	2,033	7,006	285	9,384
2005-06	2,544	7,624	263	10,431

Source: DIMA unpublished data

**Table 14: South Australia: Long Term Visitor Arrivals, 2005-06**

	TEMPORARY RESIDENTS	STUDENTS	VISITORS	TOTAL
Oceania	45	45	2	92
Europe	863	338	96	1,297
N.Africa & ME	59	186	4	249
SE Asia	326	1,942	27	2,295
NE Asia	434	3,720	77	4,231
S. & Cent. Asia	241	1,110	10	1,361
Americas	219	186	38	443
Sub-Saharan Africa	353	89	7	449
<b>Total</b>	<b>2,544</b>	<b>7624</b>	<b>263</b>	<b>10,431</b>

Source: DIMA unpublished data

There has been some controversy around the 457 visa category in South Australia. There have been a number of newspaper stories (e.g. The Advertiser February 13, 2006) which suggest that 457 migrants ...

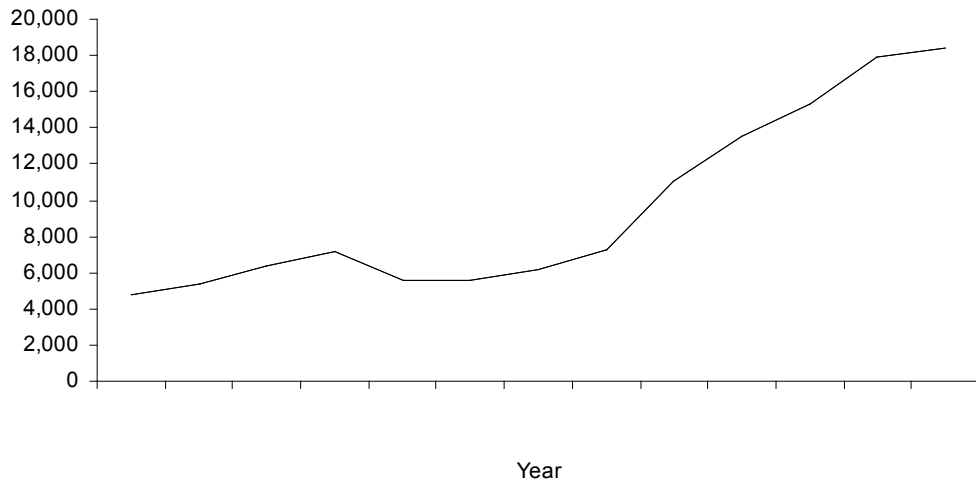
- Are being used to replace Australian workers.
- Are being paid less than Australian workers.
- Have conditions below the minimum acceptable to Australian workers.

Each of these three areas contravenes the regulations of the 457 visa which is only available for nations in the top four

ASCO categories and for which a minimum salary is set. Hence there would appear to be a process in place to prosecute employees who contravene the conditions of the visa.

One of the major elements in the increased international migration into South Australia in recent years has been the increase in student migration. Along with Australia as a whole there has been a rapid increase in overseas student numbers as education export has become a more significant industry. However, Figure 4 shows that not only have numbers more than tripled since 1999, increasing to 18,442 in July 2006, but South Australia has increased its share of the

**Figure 4: South Australia: Overseas Student Enrolments, 1994 to 2006**

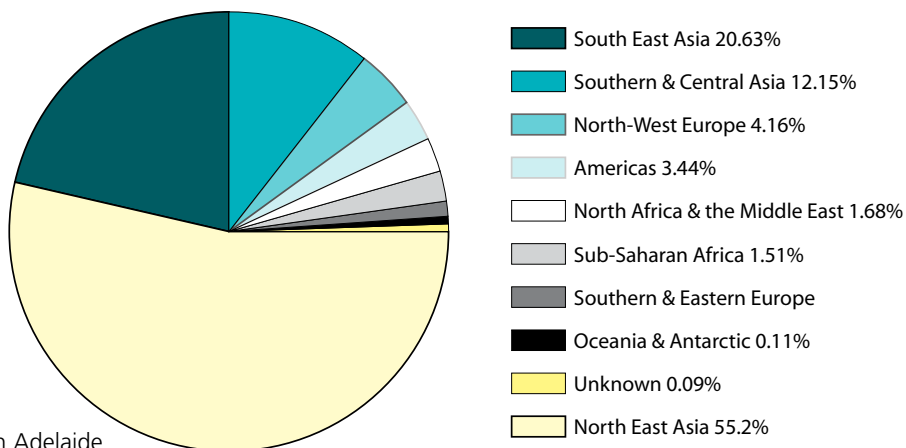


Source: Australian Education International

national intake from 3.2 percent in 2000 to 5.2 percent in 2005 and 5.5 percent in 2006. As with other forms of immigration the State has stepped up activity in attracting students to South Australia with the setting up of a dedicated

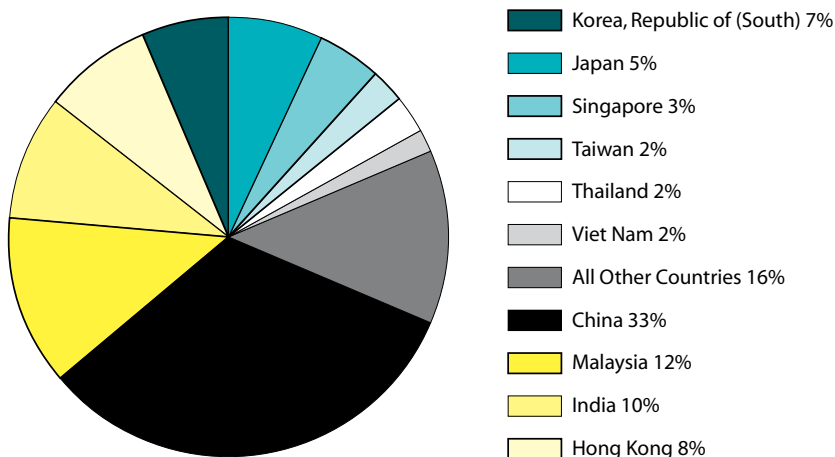
agency to facilitate this (Education Adelaide). Figure 5 and Figure 6 show the main origins of students and the dominance of Asia is apparent, especially China, Malaysia, India and Hong Kong.

**Figure 5: Onshore Overseas Students by Region of Origin, South Australia, YTD June 2006 (Total = 15,295)**



Source: Education Adelaide

**Figure 6: Top 10 Overseas Student Source Countries, All Sectors Inclusive, SA, YTD June 2006**

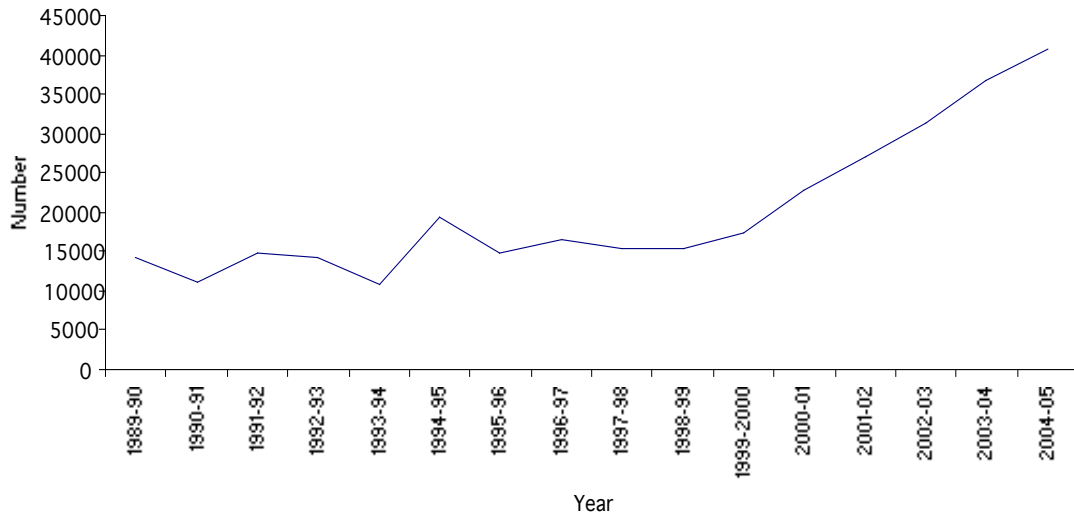


Source: Education Adelaide

It is important to realise that the settler arrival data presented earlier are only part of the total immigrant intake. Increasingly in Australia the immigrant intake includes substantial numbers of “onshore” migrants – persons already in Australia as temporary residents who apply for, and are granted, permanent residence. As Figure 7 indicates the number of “onshore migrants” in Australia’s immigrant intake has increased sharply

in recent years. There is then an important, and increasingly significant, nexus between temporary migration and permanent settlement in Australia. This nexus is one increasingly favoured by DIMA since it delivers settlers who are already familiar with life in Australia and local labour markets and have a good chance of settling successfully in Australia. Among the initiatives put in place to facilitate this transition have been arrangements to

**Figure 7: Australia: Onshore Residence Visa Grants, 1989-90 to 2004-05**

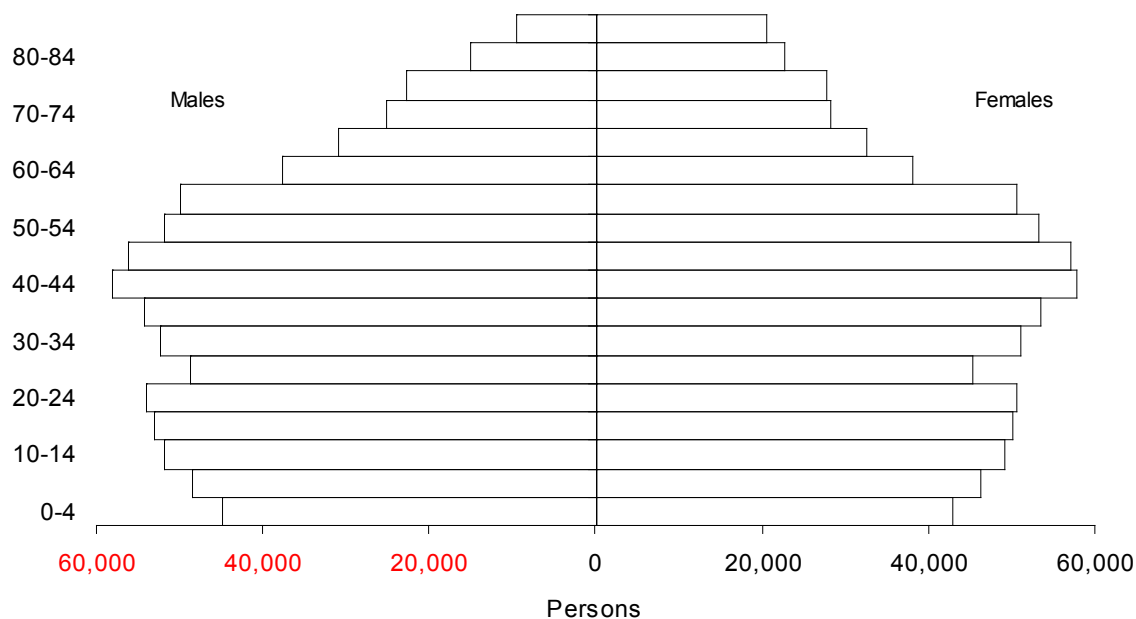


Source: DIMIA Population Flows: Immigration Aspects, various issues a

facilitate overseas students transferring to permanent residence. In 2004-05, 16,485 of the 39,600 persons transferring from temporary to permanent residence in Australia were on student visas.

One of the most significant population trends in South Australia is the ageing of the population. Figure 8 shows the age distribution of the State’s population in 2005. It shows the importance of the baby boom generation born between 1946 and 1966 and aged 39 to 59. A sharp

**Figure 8: South Australia: Age-Sex Distribution of the Population, 2005**



Source: ABS 2006b

undercutting in the age pyramid as a result of low fertility, low immigration and the net interstate outmigration of young adults in the child bearing age groups. The latter is also evident in the small numbers aged in their 20s in Figure 8. The inevitable ongoing continuation of ageing in South Australia

is apparent in Table 15, which shows the change which has occurred in the numbers in broad age groups between 2003 and 2005. The impact of the baby boomers is in evidence in the significant growth of the older population. However there was a loss of dependent age children and adults aged 25-39.

**Table 15: South Australia: Growth of the Population by Age, 2003-2005**

	2003	2005	Percent Change	Growth Rate p.a. (%)
0-4	89,587	87,820	-1.97	-1.0
5-14	197,817	195,790	-1.02	-0.5
15-24	203,316	207,692	2.15	1.1
25-39	312,965	305,442	-2.40	-1.2
40-59	425,316	434,714	2.21	1.1
60-69	130,746	139,234	6.49	3.2
70+	167,320	171,341	2.4	1.2
Total	1,527,067	1,542,033	0.98	0.5

Source: ABS Estimated Resident Population Data

The State Population Policy document has been criticised because it is largely a state-wide document and does little regarding the implications of the policy for local communities. In fact there is considerable variation between local areas in the likely impact of the policy. Table 16

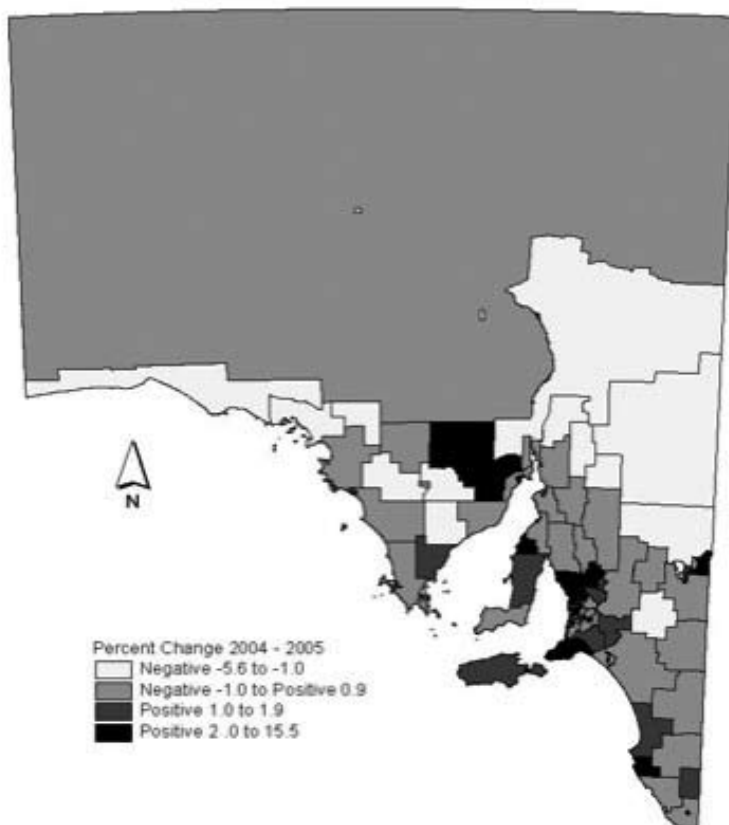
shows that over recent years growth outside Adelaide has been faster than in the Adelaide Statistical Division. However, Figure 9 shows that in non-metropolitan South Australia population growth in recent years has been concentrated in particular parts of the State. In particular there has been rapid growth in the Outer Adelaide Statistical Division. This includes many areas which are best described as peri-urban and closely connected to the Adelaide Metropolitan Area through commuting and other linkages. The most rapidly growing SLAs in the State are the South Coast areas of Victor Harbor – Goolwa – Port Elliot where commuter immigrants have been joined by retirement migrants from Adelaide and elsewhere in the State. Further away from Adelaide the growth is restricted to some regional centres and coastal communities which have been favoured by resort-retirement related development. The recent surge of the mining industry in the northern areas is yet to be reflected in population growth.

**Table 16: South Australia: Recent Population Change in Adelaide Statistical Division and Non-Metropolitan South Australia, 2000-2004**

	ADELAIDE	REST OF SA
Population		
2000	1,102,445	405,583
2004	1,123,199	413,134
2005	1,129,269	417,005
Percent Change		
2000-05	2.43	2.85
2004-05	0.53	0.93

Source: ABS 2006a, 16

**Figure 9: South Australia: Percent Change in Population by SLA, 2004-2005**

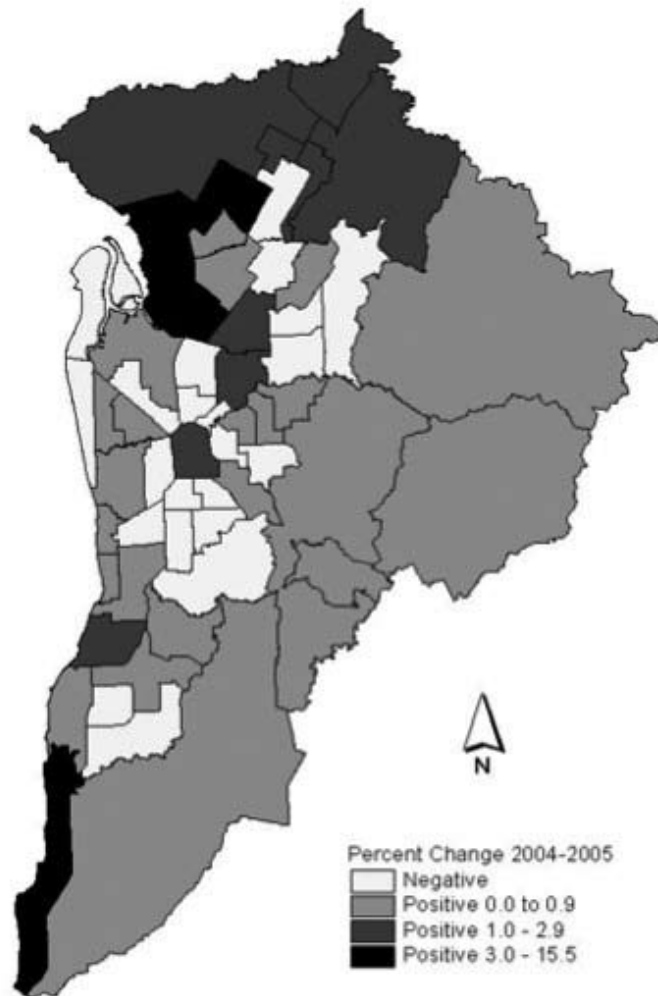


Source: ABS, Cat. No. 3218.0.55.001 Regional Population Growth, Australia - companion data, 2006

Turning to the Adelaide Statistical Division, Figure 10 shows that growth has been predominantly in the peripheral areas where there are greenfields development of new housing. However with the increasing focus upon increasing population densities within the built up area of Australian cities, urban

regeneration and urban infill developments there is also population growth in parts of the inner and middle suburbs of Adelaide. While this is masked to some extent by the use of SLAs this trend is apparent in Figure 10.

**Figure 10: Adelaide Statistical Division: Percent Change in Population by SLA, 2004-2005**



Source: ABS, Cat. No. 3218.0.55.001 Regional Population Growth, Australia - companion data, 2006

## Policy Issues And Directions

As indicated earlier, population has become an area of policy concern for the South Australian Government and the State's strategic plan set a number of targets with respect to population, namely ...

Target 1.7 : Total Population

"Increase South Australia's population to 2 million by 2050, rather than the projected pop'n decline"

Target 1.8 : Interstate Migration

"Reduce net loss to interstate to zero by 2008 with a positive inflow from 2009"

Target 1.9 : Overseas Migration

"Match SA's share of international migrants to Australia with

the State's share of the overall national pop'n over the next 10 years"

Target 5.8 : Regional Populations

"Maintain and develop viable regional population levels for sustainable communities"

The Progress Report on the Strategic Plan (South Australia's Strategic Plan Audit Committee 2006, 15-18) found that on the first target it was too early to assess progress in the context of the target. Nevertheless if the most recent annual population growth figure up to the March Quarter 2006 of 11,900 was to be maintained the target would be reached. The second target on net interstate migration is very unlikely to be achieved. The most recent ABS data (2006a) show a decline in the net interstate migration in the March Quarter from -1,018 in 2004

and -1,082 in 2005 to -242 in 2006 but it will need to be observed for another two years to establish a trend. Overseas migration has been the success story of the Plan period. Again while too much store cannot be put on a single quarter's figure in the 2006 March Quarter, 7.5 percent of the net national intake by international migration was in South Australia –roughly equivalent to the share of the national population. Assessment of the fourth target will have to await the publication of data from the 2006 Census of Population and Housing. Nevertheless estimates of population growth at the SLA level see the non metropolitan population growing faster than that of the Adelaide metropolitan area. Nevertheless this is composed of rapid growth in a few areas, mostly in the peri-urban area of Adelaide and stability or decline elsewhere. It would seem that some rethinking of the population targets is advisable. This would involve at least incorporating a target with respect to fertility and modifying the net interstate migration to a more reachable and meaningful figure.

## Conclusion

There have been some substantial changes in South Australian population patterns over the last two years. The most striking has been the increase in international migration net gains. This has been the result partly of an increase in the availability of work in the State but also has been due to the State's active policy to lobby the Federal Government regarding the SSRM schemes and proactive efforts to attract immigrants through its agency Immigration SA. However there must be a realisation that attracting the immigrants is only one element in addressing the State's population issues. Retention of those immigrants is going to be a major challenge over the next two years in the light of ...

- A history, albeit little studied, of immigrants to the State moving to the Eastern states after spending a brief period in South Australia.
- The tightening of labour markets all over Australia which mean that jobs are available in other states.
- The large immigrant communities in other states that can serve as magnets to family, friends and compatriots in South Australia.

This makes it incumbent upon the government to have a proactive policy and program of retention of immigrants. Some elements of this might be ...

- Significant involvement of local government and civil society to assist in the successful adjustment and settlement of migrants.
- Ensuring that relevant agencies such as an education, health are informed in a timely way of the influx of migrants into their jurisdiction.
- Proper resourcing of agencies which are crucial to the

adjustment of migrants – especially education.

- Ensuring that Multicultural SA has sufficient resources to fund its activities to assist the adjustment, especially of NES groups.

It needs to be recalled that the last time that South Australia had a large scale effort to bring immigrants to the State was in the 1950s and 1960s when the government attracted large numbers of immigrants from the UK to work in the burgeoning secondary industry. This was highly successful not least because of the strenuous efforts which were made to facilitate the successful settlement of immigrants in the State. This included among other things assistance in entering the employment and housing markets. Often jobs were arranged before migration and the South Australian Housing Trust was very active in providing housing especially in developing areas like Elizabeth. Many aspects of the situation are different but the lessons learned a half century ago still have relevance. Successful retention of immigrants doesn't just happen – it will need careful, well resourced and focused government intervention at State and local levels.

## References

**Australian Bureau of Statistics (ABS), Australian Demographic Statistics, Catalogue no. 3101.0, ABS,**

**Canberra, various issues.**

**Australian Bureau of Statistics (ABS), 1986, Australian Demographic Trends, Catalogue no. 3102.0, ABS, Canberra.**

**Australian Bureau of Statistics (ABS), 2001. Australian Demographic Statistics March Quarter 2002. Catalogue no. 3101.0. Canberra: ABS.**

**Australian Bureau of Statistics (ABS), 2002. Australian Demographic Statistics June Quarter 2002. Catalogue no. 3101.0. Canberra: ABS.**

**Australian Bureau of Statistics (ABS), 2003. Australian Demographic Statistics March Quarter 2003. Catalogue no. 3101.0. Canberra: ABS.**

**Australian Bureau of Statistics (ABS), 2005a. Births Australia, Catalogue no. 3301.0, ABS, Canberra.**

**Australian Bureau of Statistics (ABS), 2005b. Australian Demographic Statistics June Quarter 2005, Catalogue No. 3101.0, ABS, Canberra.**

**Australian Bureau of Statistics (ABS), 2006a. Australian Demographic Statistics March Quarter 2006, Catalogue No. 3101.0, ABS, Canberra.**

Australian Bureau of Statistics (ABS), 2006b. Australian Demographic Statistics December Quarter 2005, Catalogue No. 3101.0, ABS, Canberra.

Birrell, B., Hawthorne, L. and Richardson, S., 2006. Evaluation of The General Skilled Migration Categories, AGPS, Canberra.

Department of Immigration and Multicultural and Indigenous Affairs (DIMIA). Immigration Update, various issues, AGPS, Canberra.

Department of Immigration and Multicultural and Indigenous Affairs (DIMIA). Population Flows: Immigration Aspects, various issues, AGPS, Canberra.

Department of Immigration and Multicultural Affairs (DIMA), 2006. South Australia: Demographic Trends in Humanitarian Arrivals 2006, AGPS, Canberra.

Government of South Australia, 2004. Prosperity Through People: A Population Policy for South Australia, Government of South Australia, Adelaide.

Hugo, G.J., 1999. A New Paradigm of International Migration in Australia, *New Zealand Population Review*, 25, 1-2, pp. 1-39.

Hugo, G.J., 2002. Population Trends in South Australia, *People and Place*, Vol. 10, No. 1, pp. 26-41.

Hugo, G.J., 2005. Regionalization of Immigration in Australia. Paper prepared for workshop on Regionalization of Immigration in Federations and Quazi Federations, International Metropolis Conference, Toronto, Canada, 17-21 October.

Hugo, G.J., 2006. Temporary Migration and the Labour Market in Australia, *Australian Geographer*, 37, 2, pp.211-231.

McDonald, P., 2005. Has the Australian fertility rate stopped falling? *People and Place*, vol.13, no.3, pp. 1-5.

South Australia's Strategic Plan Audit Committee, 2006. South Australia's Strategic Plan Progress Report 2006. Report of South Australia's Strategic Plan Audit Committee, Adelaide, June.